

## Product datasheet for **TP310065**

### STAT6 (NM\_003153) Human Recombinant Protein

#### Product data:

Product Type:	Recombinant Proteins
Description:	Recombinant protein of human signal transducer and activator of transcription 6, interleukin-4 induced (STAT6), 20 µg
Species:	Human
Expression Host:	HEK293T
Expression cDNA	>Peptide sequence encoded by RC210065
Clone or AA Sequence:	Blue=ORF Red=Cloning site Green=Tag(s)

MSLWGLVSKMPPEKVQRLYVDFPQHLRHLLGDWLESQPWEFLVGSDAFCCNLTSALLSDTVQHLQASVG  
EQGEGSTILQHISTLESYQRDPLKLVATFRQILQGEKKAVMEQFRHLPMPFHWKQEELKFKTGLRRLQ  
HRVGEIHLLREALQKGAEAGQVSLHSLIETPANGTGPSEALAMLLQETTGELEAAKALVKRIQIWKQRQ  
QQLAGNGAPFEESLAPLQERCESLVDIYSQLQQEVGAAGGELEPKTRASLTGRLDEVLRTLVTSCFLVE  
KQPPQVLKTQTKFQAGVRFLGLRFLGAPAKPPLVRADMVTEKQARELSVPGPGAGAESTGEIINNTV  
PLENSIPGNCCSALFKNLLKKIKRCERKGTESVTEEKCAVLFSASFTLGPGLPIQLQALSPLVIV  
HGNQDNNAKATILWDNAFSEMDRVPFVVAERVPWEKMCETLNLKFMMAEVGTNRGLLPEHFLFLAQKIFN  
DNSLSMEAFQHRSVSWSQFNKEILLGRGFTFWQWFDGVLDTKRCLRSYWSDRLIIGFISKQYVTSLLL  
NEPDGTFLLRFSDEIGGITIAHVIRGQDGSPQIENIQPFSKDLRSIRSLGDRIRDLAQLKNLYPKPKPK  
DEAFRSHYKPEQMKGKDRGYVPATIKMTVERDQPLTPPELQMPMTMPSYDLGMAPDSSMSMQLGPDMPV  
QVYPPHSHSIPPYQGLSPEESVNVLSAFQEPHLQMPPSLGQMSLPFDQPHQPGLLPCQPQEHAVSSPDP  
LLCSDVTMVEDSCLSQPVTAFPQGTWIGEDIFPPLLPTEQDLTKLLLEGQGESGGGSLGAQPLLQPSH  
YGQSGISMHMDLRANLSW  
TRTRPLEQKLISEEDLAANDILDYKDDDDKV

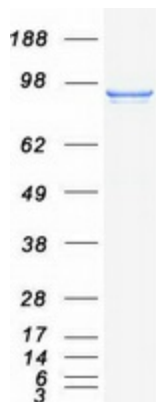
Recombinant protein using RC210065 also available, [TP310065](#)

Tag:	C-Myc/DDK
Predicted MW:	94 kDa
Concentration:	>0.05 µg/µL as determined by microplate BCA method
Purity:	> 80% as determined by SDS-PAGE and Coomassie blue staining
Buffer:	25 mM Tris-HCl, 100 mM glycine, pH 7.3, 10% glycerol



[View online »](#)

<b>Preparation:</b>	Recombinant protein was captured through anti-DDK affinity column followed by conventional chromatography steps.
<b>Note:</b>	For testing in cell culture applications, please filter before use. Note that you may experience some loss of protein during the filtration process.
<b>Storage:</b>	Store at -80°C.
<b>Stability:</b>	Stable for 12 months from the date of receipt of the product under proper storage and handling conditions. Avoid repeated freeze-thaw cycles.
<b>RefSeq:</b>	<a href="#">NP_003144</a>
<b>Locus ID:</b>	6778
<b>UniProt ID:</b>	<a href="#">P42226</a>
<b>RefSeq Size:</b>	4031
<b>Cytogenetics:</b>	12q13.3
<b>RefSeq ORF:</b>	2541
<b>Synonyms:</b>	D12S1644; IL-4-STAT; STAT6B; STAT6C
<b>Summary:</b>	The protein encoded by this gene is a member of the STAT family of transcription factors. In response to cytokines and growth factors, STAT family members are phosphorylated by the receptor associated kinases, and then form homo- or heterodimers that translocate to the cell nucleus where they act as transcription activators. This protein plays a central role in exerting IL4 mediated biological responses. It is found to induce the expression of BCL2L1/BCL-X(L), which is responsible for the anti-apoptotic activity of IL4. Knockout studies in mice suggested the roles of this gene in differentiation of T helper 2 (Th2) cells, expression of cell surface markers, and class switch of immunoglobulins. Alternative splicing results in multiple transcript variants.[provided by RefSeq, May 2010]
<b>Protein Families:</b>	Druggable Genome, ES Cell Differentiation/IPS, Stem cell relevant signaling - DSL/Notch pathway, Stem cell relevant signaling - JAK/STAT signaling pathway, Transcription Factors
<b>Protein Pathways:</b>	Jak-STAT signaling pathway

**Product images:**

Coomassie blue staining of purified STAT6 protein (Cat# TP310065). The protein was produced from HEK293T cells transfected with STAT6 cDNA clone (Cat# [RC210065]) using MegaTran 2.0 (Cat# [TT210002]).