

Product datasheet for TP310062L

PPM1J (NM_005167) Human Recombinant Protein

Product data:

| | |
|---------------------------------------|--|
| Product Type: | Recombinant Proteins |
| Description: | Recombinant protein of human protein phosphatase 1J (PP2C domain containing) (PPM1J), 1 mg |
| Species: | Human |
| Expression Host: | HEK293T |
| Expression cDNA Clone or AA Sequence: | >RC210062 protein sequence Red =Cloning site Green =Tags(s) |

MLNRRVRSVAHVLVSSGGAPPPRPKSPDL PNAASAPPAAPAAPEAPRSPPAKAGSGSATPAKAVEARASFSRP
TFLQLSPGGLRRADDHAGRAVQSPD TGRRLPWSTGYAEVINAGKSRHNEDQACCEVVYVEGRRSVTGVV
REPSRGQGLCFYYWGLFDGHAGGGAEMASRL LHRHIREQLKDLVEILQDPSPPPLCLPTTPGTPDSSDP
SHLLGPQSCWSSQKEVSHESLVVGAIENAFQ L MDEQMARERRGHQVEGGCCALVVIYLLGKVVVANAGDS
RAIIVRNGEII PMSREFTPETERQRLQLL GFLKPELLGSEFTHLEFPRRVLPKELGQRM LYRDQNMTGWA
YKKIELEDLRFPLVCGEGKKARVMATIGVTR GLGDHSLKVCSS TLPKIPFLSCFPEVRVYDLTQYEHCPD
DVLVLGTDGLWDVTTDCEVAATVDRVLSAYEP NDHSRYTALA QALVLGARGT PRDRGWRLPN NKLKSGDD
ISVFIPLGGPGSYS

TRTRPLEQKLISEEDLAANDILDYKDDDDKV

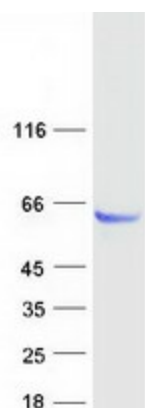
| | |
|----------------|--|
| Tag: | C-Myc/DDK |
| Predicted MW: | 54.7 kDa |
| Concentration: | >0.05 µg/µL as determined by microplate BCA method |
| Purity: | > 80% as determined by SDS-PAGE and Coomassie blue staining |
| Buffer: | 25 mM Tris-HCl, 100 mM glycine, pH 7.3, 10% glycerol |
| Preparation: | Recombinant protein was captured through anti-DDK affinity column followed by conventional chromatography steps. |
| Note: | For testing in cell culture applications, please filter before use. Note that you may experience some loss of protein during the filtration process. |
| Storage: | Store at -80°C. |



[View online »](#)

| | |
|--------------------------|---|
| Stability: | Stable for 12 months from the date of receipt of the product under proper storage and handling conditions. Avoid repeated freeze-thaw cycles. |
| RefSeq: | NP_005158 |
| Locus ID: | 333926 |
| UniProt ID: | Q5JR12 |
| RefSeq Size: | 1762 |
| Cytogenetics: | 1p13.2 |
| RefSeq ORF: | 1515 |
| Synonyms: | PP2C-zeta; PP2CZ; PP2Czeta; PPP2CZ |
| Summary: | This gene encodes the serine/threonine protein phosphatase. The mouse homolog of this gene apparently belongs to the protein phosphatase 2C family of genes. The exact function of this gene is not yet known. [provided by RefSeq, Jul 2008] |
| Protein Families: | Phosphatase |

Product images:



Coomassie blue staining of purified PPM1J protein (Cat# [TP310062]). The protein was produced from HEK293T cells transfected with PPM1J cDNA clone (Cat# [RC210062]) using MegaTran 2.0 (Cat# [TT210002]).