

Product datasheet for **TP310062**

PPM1J (NM_005167) Human Recombinant Protein

Product data:

Product Type:	Recombinant Proteins
Description:	Recombinant protein of human protein phosphatase 1J (PP2C domain containing) (PPM1J), 20 µg
Species:	Human
Expression Host:	HEK293T
Expression cDNA Clone or AA Sequence:	>RC210062 protein sequence Red =Cloning site Green =Tags(s)

MLNRRVRSVAVAHLVSSGGAPPPRPKSPDL PNAASAPPAAPAAPEAPRSPPAKAGSGSATPAKAVEARASFSRP
TFLQLSPGGLRRADDHAGRAVQSPD TGRRLPWSTGYAEVINAGKSRHNEDQACCEVVYVEGRRSVTGVP
REPSRGQGLCFYYWGLFDGHAGGGAEMASRL LHRHIREQLKDLVEILQDPSPPPLCLPTTPGTPDSSDP
SHLLGPQSCWSSQKEVSHESLVVGAIENAFQ L MDEQMARERRGHQVEGGCCALVVIYLLGKVVVANAGDS
RAIIVRNGEII PMSREFTPETERQRLQLL GFLKPELLGSEFTHLEFPRRVLPKELGQRM LYRDQNMTGWA
YKKIELEDLRFPLVCGEGKKARVMATIGVTR GLGDHSLKVCSS TLPKPF LSCFPEVRVYDLTQYEHCPD
DVLVLGTDGLWDVTTDCEVAATVDRVLSAYEP NDHSRYTALA QALVLGARGT PRDRGWRLPN NKLKLGSGDD
ISVFIPLGGPGSYS

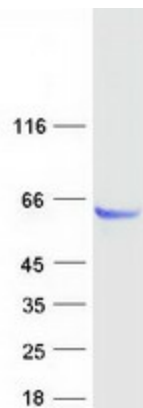
TRTRPLEQKLISEEDLAANDILDYKDDDDKV

Tag:	C-Myc/DDK
Predicted MW:	54.7 kDa
Concentration:	>0.05 µg/µL as determined by microplate BCA method
Purity:	> 80% as determined by SDS-PAGE and Coomassie blue staining
Buffer:	25 mM Tris-HCl, 100 mM glycine, pH 7.3, 10% glycerol
Preparation:	Recombinant protein was captured through anti-DDK affinity column followed by conventional chromatography steps.
Note:	For testing in cell culture applications, please filter before use. Note that you may experience some loss of protein during the filtration process.
Storage:	Store at -80°C.



[View online »](#)

Stability:	Stable for 12 months from the date of receipt of the product under proper storage and handling conditions. Avoid repeated freeze-thaw cycles.
RefSeq:	NP_005158
Locus ID:	333926
UniProt ID:	Q5JR12
RefSeq Size:	1762
Cytogenetics:	1p13.2
RefSeq ORF:	1515
Synonyms:	PP2C-zeta; PP2CZ; PP2Czeta; PPP2CZ
Summary:	This gene encodes the serine/threonine protein phosphatase. The mouse homolog of this gene apparently belongs to the protein phosphatase 2C family of genes. The exact function of this gene is not yet known. [provided by RefSeq, Jul 2008]
Protein Families:	Phosphatase

Product images:

Coomassie blue staining of purified PPM1J protein (Cat# TP310062). The protein was produced from HEK293T cells transfected with PPM1J cDNA clone (Cat# [RC210062]) using MegaTran 2.0 (Cat# [TT210002]).