

Product datasheet for TP310060L

EFCAB4A (CRACR2B) (NM_173584) Human Recombinant Protein

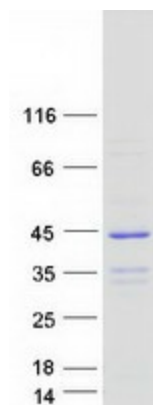
Product data:

Product Type:	Recombinant Proteins
Description:	Recombinant protein of human EF-hand calcium binding domain 4A (EFCAB4A), 1 mg
Species:	Human
Expression Host:	HEK293T
Expression cDNA Clone or AA Sequence:	>RC210060 protein sequence Red =Cloning site Green =Tags(s) MASPGKPGADEAQEEEGELEGGSSAGPRAAILEQAEELFLLCDKEAKGFITKHDQLQLQSDPLPTPEQLEA VFESLDAQHTGFLTAREFCLGLGMFVGVASAQGANPCRTPEETFESGGLDVQGTAGSLDEEEEEERFHT VLEQLGVAPVLGEQRAVRTLWARLQRRPELLGSFEDVLIRASACLEEAARERDGLAQALRRRESEHERE VRALYEETEQLREQSRRPPSQNFARGERRSRLELELQIREQDLERAGLRQRERRGRRLQEHAERESQPAT ATGAAQGAEYTAAG TR TRPLEQKLISEEDLAANDILDYKDDDDKV
Tag:	C-Myc/DDK
Predicted MW:	32.6 kDa
Concentration:	>0.05 µg/µL as determined by microplate BCA method
Purity:	> 80% as determined by SDS-PAGE and Coomassie blue staining
Buffer:	25 mM Tris-HCl, 100 mM glycine, pH 7.3, 10% glycerol
Preparation:	Recombinant protein was captured through anti-DDK affinity column followed by conventional chromatography steps.
Note:	For testing in cell culture applications, please filter before use. Note that you may experience some loss of protein during the filtration process.
Storage:	Store at -80°C.
Stability:	Stable for 12 months from the date of receipt of the product under proper storage and handling conditions. Avoid repeated freeze-thaw cycles.
RefSeq:	<u>NP_775855</u>
Locus ID:	283229


[View online »](#)

UniProt ID:	<u>Q8N4Y2</u>
RefSeq Size:	1681
Cytogenetics:	11p15.5
RefSeq ORF:	882
Synonyms:	EFCAB4A
Summary:	Plays a role in store-operated Ca(2+) entry (SOCE).[UniProtKB/Swiss-Prot Function]

Product images:



Coomassie blue staining of purified CRACR2B protein (Cat# [TP310060]). The protein was produced from HEK293T cells transfected with CRACR2B cDNA clone (Cat# [RC210060]) using MegaTran 2.0 (Cat# [TT210002]).