

## Product datasheet for **TP310060**

### **EFCAB4A (CRACR2B) (NM\_173584) Human Recombinant Protein**

#### **Product data:**

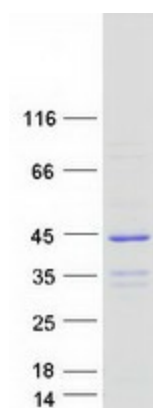
Product Type:	Recombinant Proteins
Description:	Recombinant protein of human EF-hand calcium binding domain 4A (EFCAB4A), 20 µg
Species:	Human
Expression Host:	HEK293T
Expression cDNA Clone or AA Sequence:	>RC210060 protein sequence <b>Red</b> =Cloning site <b>Green</b> =Tags(s)
	<p>MASPGKPGADEAQEEEGELEGGSGAPRAAILEQAEELFLLCDKEAKGFITKHDQLQGLQSDLPQTPEQLEA VFESLDQAHTGFLTAREFCLGLGMFVGVASAQGANPCRTPEETFESGGLDVQGTAGSLDEEEEEERFHT VLEQLGVAPVLGEQRAVRTLWARLQRRPELLGSFEDVLIRASACLEEAARERDGLQALRRRESEHERE VRALYEETEQLREQSRRPPSQNFARGERRSRLELELQIREQDLERAGLRQRERRGRRLQEHAERESQPAT ATGAAQGAEYTAAG</p> <p><b>TR</b>TRPLE<b>QKLISEEDLA</b>ANDILDYKDDDDKV</p>
Tag:	C-Myc/DDK
Predicted MW:	32.6 kDa
Concentration:	>0.05 µg/µL as determined by microplate BCA method
Purity:	> 80% as determined by SDS-PAGE and Coomassie blue staining
Buffer:	25 mM Tris-HCl, 100 mM glycine, pH 7.3, 10% glycerol
Preparation:	Recombinant protein was captured through anti-DDK affinity column followed by conventional chromatography steps.
Note:	For testing in cell culture applications, please filter before use. Note that you may experience some loss of protein during the filtration process.
Storage:	Store at -80°C.
Stability:	Stable for 12 months from the date of receipt of the product under proper storage and handling conditions. Avoid repeated freeze-thaw cycles.
RefSeq:	<u><a href="#">NP_775855</a></u>
Locus ID:	283229



[View online »](#)

UniProt ID:	<u>Q8N4Y2</u>
RefSeq Size:	1681
Cytogenetics:	11p15.5
RefSeq ORF:	882
Synonyms:	EFCAB4A
Summary:	Plays a role in store-operated Ca(2+) entry (SOCE).[UniProtKB/Swiss-Prot Function]

### Product images:



Coomassie blue staining of purified CRACR2B protein (Cat# TP310060). The protein was produced from HEK293T cells transfected with CRACR2B cDNA clone (Cat# [RC210060]) using MegaTran 2.0 (Cat# [TT210002]).