

Product datasheet for **TP310052L**

Galectin 7 (LGALS7) (NM_002307) Human Recombinant Protein

Product data:

Product Type:	Recombinant Proteins
Description:	Purified recombinant protein of Homo sapiens lectin, galactoside-binding, soluble, 7 (LGALS7), 1 mg
Species:	Human
Expression Host:	HEK293T
Expression cDNA Clone or AA Sequence:	>RC210052 representing NM_002307 Red =Cloning site Green =Tags(s) MSNVPHKSSLPEGIRPGTVLRIRGLVPPNASRFHVNLLCGEEQGSDAALHFNPRLDTSEVWFNSKEQGSW GREERGPVGFQRGQPFEVLIASDDGFKAVVGDAQYHHFRHRLPLARVRLVEVGGDVQLDSVRIF TRTRPLEQKLISEEDLAANDILDYKDDDDKV
Tag:	C-Myc/DDK
Predicted MW:	14.9 kDa
Concentration:	>0.05 µg/µL as determined by microplate BCA method
Purity:	> 80% as determined by SDS-PAGE and Coomassie blue staining
Buffer:	25 mM Tris-HCl, 100 mM glycine, pH 7.3, 10% glycerol
Preparation:	Recombinant protein was captured through anti-DDK affinity column followed by conventional chromatography steps.
Note:	For testing in cell culture applications, please filter before use. Note that you may experience some loss of protein during the filtration process.
Storage:	Store at -80°C.
Stability:	Stable for 12 months from the date of receipt of the product under proper storage and handling conditions. Avoid repeated freeze-thaw cycles.
RefSeq:	NP_002298
Locus ID:	3963
UniProt ID:	P47929
RefSeq Size:	498



[View online »](#)

Cytogenetics: 19q13.2

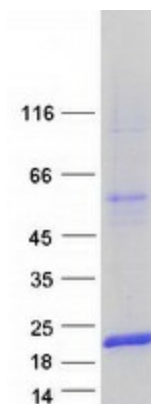
RefSeq ORF: 408

Synonyms: GAL7; LGALS7A

Summary: The galectins are a family of beta-galactoside-binding proteins implicated in modulating cell-cell and cell-matrix interactions. Differential and in situ hybridization studies indicate that this lectin is specifically expressed in keratinocytes and found mainly in stratified squamous epithelium. A duplicate copy of this gene (GeneID:653499) is found adjacent to, but on the opposite strand on chromosome 19. [provided by RefSeq, Jul 2008]

Protein Families: Secreted Protein

Product images:



Coomassie blue staining of purified LGALS7 protein (Cat# [TP310052]). The protein was produced from HEK293T cells transfected with LGALS7 cDNA clone (Cat# [RC210052]) using MegaTran 2.0 (Cat# [TT210002]).