

## Product datasheet for **TP310048M**

### Citrate synthetase (CS) (NM\_198324) Human Recombinant Protein

#### Product data:

**Product Type:** Recombinant Proteins  
**Description:** Recombinant protein of human citrate synthase (CS), nuclear gene encoding mitochondrial protein, transcript variant 2, 100 µg

**Species:** Human

**Expression Host:** HEK293T

**Expression cDNA Clone or AA Sequence:** >RC210048 representing NM\_198324  
**Red**=Cloning site **Green**=Tags(s)

MALLTAAARLLGTKNASCLVLAARHASASSTNLKDILADLIPKEQARIKTRFQQHGKTWVGQITVDMMYG  
GMRGMKGLVYETSVLDPDEGIRFRGFSIPECQKLLPKAKGGEEPLPEGLFWLLVTGHIPTEEQVSWLSKE  
WAKRAALPSHVVTMLDNFPTNLHPMSQLSAAVTALNSEN FARAYA QGISRTKYWELIYEDSMDLIAKLP  
CVAKIYRNLYREGSGIGAIDSNDWSHNFTNMLGYTDHQFTELRLYLTIHSDHEGGNVAHTSHLVGS  
ALSDPYLSFAAAMNGLAGPLHGLANQEVLWLTQLQKEVGKDVSDKLRDYIWNTLN SGRVWPGYGHAVL  
RKTDPRYTCQREFALKHLPNDPMFKLVAQLYKIVPNVLEQQKAKNPWPNVDAHSGVLLQYYGMTEMNYY  
TVLFGVSRALGVLAQLIWSRALGFPLERP KSMSTEGLMKFVDSKSG

**TRTRPLEQKLISEEDLAANDILDYKDDDDKV**

**Tag:** C-Myc/DDK

**Predicted MW:** 44.5 kDa

**Concentration:** >0.05 µg/µL as determined by microplate BCA method

**Purity:** > 80% as determined by SDS-PAGE and Coomassie blue staining

**Buffer:** 25 mM Tris-HCl, 100 mM glycine, pH 7.3, 10% glycerol

**Preparation:** Recombinant protein was captured through anti-DDK affinity column followed by conventional chromatography steps.

**Note:** For testing in cell culture applications, please filter before use. Note that you may experience some loss of protein during the filtration process.

**Storage:** Store at -80°C.

**Stability:** Stable for 12 months from the date of receipt of the product under proper storage and handling conditions. Avoid repeated freeze-thaw cycles.



[View online >](#)

RefSeq: [NP\\_938083](#)

Locus ID: 1431

UniProt ID: [O75390](#)

RefSeq Size: 3080

Cytogenetics: 12q13.3

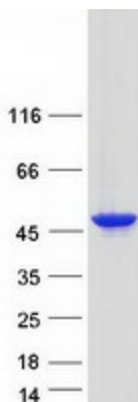
RefSeq ORF: 1203

Synonyms: citrate synthase; citrate synthase, mitochondrial

**Summary:** The protein encoded by this gene is a Krebs tricarboxylic acid cycle enzyme that catalyzes the synthesis of citrate from oxaloacetate and acetyl coenzyme A. The enzyme is found in nearly all cells capable of oxidative metabolism. This protein is nuclear encoded and transported into the mitochondrial matrix, where the mature form is found. [provided by RefSeq, Jul 2008]

**Protein Pathways:** Citrate cycle (TCA cycle), Glyoxylate and dicarboxylate metabolism, Metabolic pathways

### Product images:



Coomassie blue staining of purified CS protein (Cat# [TP310048]). The protein was produced from HEK293T cells transfected with CS cDNA clone (Cat# [RC210048]) using MegaTran 2.0 (Cat# [TT210002]).