

## Product datasheet for **TP310046**

### PSMD4 (NM\_002810) Human Recombinant Protein

#### Product data:

Product Type:	Recombinant Proteins
Description:	Recombinant protein of human proteasome (prosome, macropain) 26S subunit, non-ATPase, 4 (PSMD4), 20 µg
Species:	Human
Expression Host:	HEK293T
Expression cDNA Clone or AA Sequence:	>RC210046 protein sequence <b>Red</b> =Cloning site <b>Green</b> =Tags(s)

MVLESTMVCVDNSEYMRNGDFLPTRLQAQQDAVNIVCHSKTRSNPENNVGLITLANDCEVLTTLTPDTGR  
ILSKLHTVQPKGKITFCTGIRVAHLALKHRQGKNHKMRIIFVGGSPVEDNEKDLVKLAKRLKKEKVNVDI  
INFGEEEVNTEKLTAFVNTLNGKDGTSGLVTVPPGPSLADALISSPILAGEGGAMLGLGASDFEFGVDP  
SADPELALALRVSMEEQRQRQEEEEARRAAAAASAAEAGIATTGTEDSDDALLKMTISQQEFGRGTGLPDLSS  
MTEEEQIAYAMQMSLQGAIEFGQAESADIDASSAMDTSEPAKEEDDYDVMQDPEFLQSVLENLPGVDPNNE  
AIRNAMGSLASQATKDGKKDKKKEEDKK

**TRTRPLEQKLISEEDLAANDILDYKDDDDKV**

Tag:	C-Myc/DDK
Predicted MW:	40.6 kDa
Concentration:	>0.05 µg/µL as determined by microplate BCA method
Purity:	> 80% as determined by SDS-PAGE and Coomassie blue staining
Buffer:	25 mM Tris-HCl, 100 mM glycine, pH 7.3, 10% glycerol
Preparation:	Recombinant protein was captured through anti-DDK affinity column followed by conventional chromatography steps.
Note:	For testing in cell culture applications, please filter before use. Note that you may experience some loss of protein during the filtration process.
Storage:	Store at -80°C.
Stability:	Stable for 12 months from the date of receipt of the product under proper storage and handling conditions. Avoid repeated freeze-thaw cycles.
RefSeq:	<u><a href="#">NP_002801</a></u>



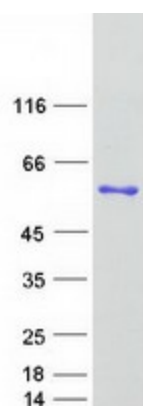
[View online »](#)

Locus ID: 5710  
UniProt ID: [P55036](#)  
RefSeq Size: 1332  
Cytogenetics: 1q21.3  
RefSeq ORF: 1131  
Synonyms: AF; AF-1; ASF; MCB1; pUB-R5; Rpn10; S5A

**Summary:** The 26S proteasome is a multicatalytic proteinase complex with a highly ordered structure composed of 2 complexes, a 20S core and a 19S regulator. The 20S core is composed of 4 rings of 28 non-identical subunits; 2 rings are composed of 7 alpha subunits and 2 rings are composed of 7 beta subunits. The 19S regulator is composed of a base, which contains 6 ATPase subunits and 2 non-ATPase subunits, and a lid, which contains up to 10 non-ATPase subunits. Proteasomes are distributed throughout eukaryotic cells at a high concentration and cleave peptides in an ATP/ubiquitin-dependent process in a non-lysosomal pathway. An essential function of a modified proteasome, the immunoproteasome, is the processing of class I MHC peptides. This gene encodes one of the non-ATPase subunits of the 19S regulator lid. Pseudogenes have been identified on chromosomes 10 and 21. [provided by RefSeq, Jul 2008]

**Protein Pathways:** Proteasome

### Product images:



Coomassie blue staining of purified PSMD4 protein (Cat# TP310046). The protein was produced from HEK293T cells transfected with PSMD4 cDNA clone (Cat# [RC210046]) using MegaTran 2.0 (Cat# [TT210002]).