

## Product datasheet for **TP310044M**

### TCP1 theta (CCT8) (NM\_006585) Human Recombinant Protein

#### Product data:

Product Type:	Recombinant Proteins
Description:	Recombinant protein of human chaperonin containing TCP1, subunit 8 (theta) (CCT8), 100 µg
Species:	Human
Expression Host:	HEK293T
Expression cDNA Clone or AA Sequence:	>RC210044 protein sequence <b>Red</b> =Cloning site <b>Green</b> =Tags(s)

MALHVPKAPGFAQMLKEGAKHFSGLEEAAYRNIQACKELAQTTRTAYGPNGMNMKVINHLEKLFVTNDAA  
TILRELEVQHAAKMIVMASHMQEQEVDGNTNFVLVAFAGALLEAEELLRIGLSVSEVIEGYEACRKAH  
EILPNLVCCSAKNLRDIDEVSSLLRTSIMSKQYGNVFLAKLIAQACVSIFPDSGFHNVNIRVCKILGS  
GISSSVLHGMVFKKETEGDVTSVKDAKIAVYSCPFDMITETKGTVLIKTAEELMNFSGKEENLMDAQV  
KAIADTGANVVVTGGKVADMALHYANKYNIMLVRNLNSKWDLRRLCKTVGATALPRLTPPVLEEMGHCDV  
YLSEVGDQVWFKHEKEDGAISTIVLRGSTDNLMDIERAVDDGVNTFKVLTRDKRLVPGGGATEIELA  
KQITSYGETCPGLEQYAIKKFAEAFEIPRALAENSGVKANEVISKLYAVHQEGNKNVGLDIEAEVPAVK  
DMLEAGILDYLGKYWAIKLATNAAVTVLRVDQIIMAKPAGGPKPPSGKKDWDQND

**TRTRPLEQKLISEEDLAANDILDYKDDDDKV**

Tag:	C-Myc/DDK
Predicted MW:	59.4 kDa
Concentration:	>0.05 µg/µL as determined by microplate BCA method
Purity:	> 80% as determined by SDS-PAGE and Coomassie blue staining
Buffer:	25 mM Tris-HCl, 100 mM glycine, pH 7.3, 10% glycerol
Preparation:	Recombinant protein was captured through anti-DDK affinity column followed by conventional chromatography steps.
Note:	For testing in cell culture applications, please filter before use. Note that you may experience some loss of protein during the filtration process.
Storage:	Store at -80°C.
Stability:	Stable for 12 months from the date of receipt of the product under proper storage and handling conditions. Avoid repeated freeze-thaw cycles.



[View online »](#)

RefSeq: [NP\\_006576](#)

Locus ID: 10694

UniProt ID: [P50990](#)

RefSeq Size: 2007

Cytogenetics: 21q21.3

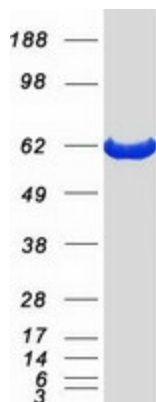
RefSeq ORF: 1644

Synonyms: C21orf112; Cctq; D21S246; PRED71

**Summary:** This gene encodes the theta subunit of the CCT chaperonin, which is abundant in the eukaryotic cytosol and may be involved in the transport and assembly of newly synthesized proteins. Alternative splicing results in multiple transcript variants of this gene. A pseudogene related to this gene is located on chromosome 1. [provided by RefSeq, Sep 2013]

**Protein Families:** Druggable Genome

### Product images:



Coomassie blue staining of purified CCT8 protein (Cat# [TP310044]). The protein was produced from HEK293T cells transfected with CCT8 cDNA clone (Cat# [RC210044]) using MegaTran 2.0 (Cat# [TT210002]).