

Product datasheet for **TP310044L**

TCP1 theta (CCT8) (NM_006585) Human Recombinant Protein

Product data:

| | |
|---------------------------------------|---|
| Product Type: | Recombinant Proteins |
| Description: | Recombinant protein of human chaperonin containing TCP1, subunit 8 (theta) (CCT8), 1 mg |
| Species: | Human |
| Expression Host: | HEK293T |
| Expression cDNA Clone or AA Sequence: | >RC210044 protein sequence Red =Cloning site Green =Tags(s) |

MALHVPKAPGFAQMLKEGAKHFSGLEEAAYRNIQACKELAQTTRTAYGPNGMNKMVINHLEKLFVTNDAA
TILRELEVQHAAKMIVMASHMQEQEVDGTFNVLVAFAGALLEAEELLRIGLSVSEVIEGYEACRKAH
EILPNLVCCSAKNLRDIDEVSSLLRTSIMSKQYGNVFLAKLIAQACVSIFPDSGFHNVNIRVCKILGS
GISSSVLHGMVFKKETEGDVTSVKDAKIAVYSCPFDMITETKGTVLIKTAEELMNFSGKEENLMDAQV
KAIADTGANVVVTGGKVADMALHYANKYNIMLVRNLNSKWDLRRLCKTVGATALPRLTPPVLEEMGHCDV
YLSEVGDVTQVWFKHEKEDGAISTIVLRGSTDNLMDDIERAVDDGVNTFKVLTRDKRLVPGGGATEIELA
KQITSYGETCPGLEQYAIKKFAEAFEIPRALAENSGVKANEVISKLYAVHQEGNKNVGLDIEAEVPAVK
DMLEAGILDYLGKYWAIKLATNAAVTVLRVDQIIMAKPAGGPKPPSGKKDWDQND

TRTRPLEQKLISEEDLAANDILDYKDDDDKV

| | |
|----------------|--|
| Tag: | C-Myc/DDK |
| Predicted MW: | 59.4 kDa |
| Concentration: | >0.05 µg/µL as determined by microplate BCA method |
| Purity: | > 80% as determined by SDS-PAGE and Coomassie blue staining |
| Buffer: | 25 mM Tris-HCl, 100 mM glycine, pH 7.3, 10% glycerol |
| Preparation: | Recombinant protein was captured through anti-DDK affinity column followed by conventional chromatography steps. |
| Note: | For testing in cell culture applications, please filter before use. Note that you may experience some loss of protein during the filtration process. |
| Storage: | Store at -80°C. |
| Stability: | Stable for 12 months from the date of receipt of the product under proper storage and handling conditions. Avoid repeated freeze-thaw cycles. |



[View online »](#)

RefSeq: [NP_006576](#)

Locus ID: 10694

UniProt ID: [P50990](#)

RefSeq Size: 2007

Cytogenetics: 21q21.3

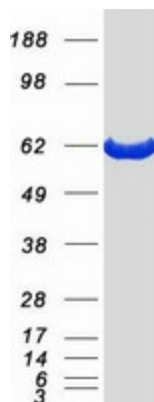
RefSeq ORF: 1644

Synonyms: C21orf112; Cctq; D21S246; PRED71

Summary: This gene encodes the theta subunit of the CCT chaperonin, which is abundant in the eukaryotic cytosol and may be involved in the transport and assembly of newly synthesized proteins. Alternative splicing results in multiple transcript variants of this gene. A pseudogene related to this gene is located on chromosome 1. [provided by RefSeq, Sep 2013]

Protein Families: Druggable Genome

Product images:



Coomassie blue staining of purified CCT8 protein (Cat# [TP310044]). The protein was produced from HEK293T cells transfected with CCT8 cDNA clone (Cat# [RC210044]) using MegaTran 2.0 (Cat# [TT210002]).