

Product datasheet for **TP310042M**

KLF2 (NM_016270) Human Recombinant Protein

Product data:

Product Type: Recombinant Proteins

Description: Recombinant protein of human Kruppel-like factor 2 (lung) (KLF2), 100 µg

Species: Human

Expression Host: HEK293T

**Expression cDNA Clone
or AA Sequence:** >RC210042 protein sequence
Red=Cloning site **Green**=Tags(s)

MALSEPILPSFSTFASPCRERGLQERWPRAEPESGGTDDDLNSVLDFILSMGLDGLGAEAAPEPPPPPP
PAFYYPEPGAPPPYSAPAGGLVSELLRPELDAPPGPALHGRFLLAPPGRVKAEPPEADGGGGYGCCAPGL
TRGPRGLKREGAPGPAASCMRGPGRPPPPDPPLSPDGPAPLPAPGPRASFPPPPGGPGFGAPGPGGLH
YAPPAPPAFGLFDDAAAAAALGLAPPAARGLLTPPASPLELLEAKPKRGRRSWPRKRTATHTCSYAGCG
KTYTKSSHLKAHLRTHHTGKPYHCNWDGCGWKFARSEDELTRHYRKHTGHRPFQCHLCDRAFSRSDHLALH
MKRHM

TRTRPLEQKLISEEDLAANDILDYKDDDDKV

Tag: C-Myc/DDK

Predicted MW: 37.2 kDa

Concentration: >0.05 µg/µL as determined by microplate BCA method

Purity: > 80% as determined by SDS-PAGE and Coomassie blue staining

Buffer: 25 mM Tris-HCl, 100 mM glycine, pH 7.3, 10% glycerol

Preparation: Recombinant protein was captured through anti-DDK affinity column followed by conventional chromatography steps.

Note: For testing in cell culture applications, please filter before use. Note that you may experience some loss of protein during the filtration process.

Storage: Store at -80°C.

Stability: Stable for 12 months from the date of receipt of the product under proper storage and handling conditions. Avoid repeated freeze-thaw cycles.

RefSeq: [NP_057354](#)

Locus ID: 10365



[View online »](#)

UniProt ID: [Q9Y5W3](#)

RefSeq Size: 1655

Cytogenetics: 19p13.11

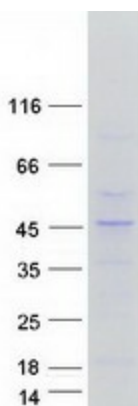
RefSeq ORF: 1065

Synonyms: LKLF

Summary: This gene encodes a protein that belongs to the Kruppel family of transcription factors. The encoded zinc finger protein is expressed early in mammalian development and is found in many different cell types. The protein acts to bind the CACCC box found in the promoter of target genes to activate their transcription. It plays a role in many processes during development and disease including adipogenesis, embryonic erythropoiesis, epithelial integrity, inflammation and t-cell viability. [provided by RefSeq, Mar 2017]

Protein Families: Transcription Factors

Product images:



Coomassie blue staining of purified KLF2 protein (Cat# [TP310042]). The protein was produced from HEK293T cells transfected with KLF2 cDNA clone (Cat# [RC210042]) using MegaTran 2.0 (Cat# [TT210002]).