

## Product datasheet for **TP310028L**

### PIGH (NM\_004569) Human Recombinant Protein

#### Product data:

Product Type:	Recombinant Proteins
Description:	Recombinant protein of human phosphatidylinositol glycan anchor biosynthesis, class H (PIGH), 1 mg
Species:	Human
Expression Host:	HEK293T
Expression cDNA Clone or AA Sequence:	>RC210028 protein sequence <b>Red</b> =Cloning site <b>Green</b> =Tags(s)

MEDERSFSDICGGRLALQRRYSPSCREFCLSCPRLSLRSLTAVTCTWLAAYGLFTLCENSMILSAAIF  
ITLLGLLGYLHFVKIDQETLLIIDLGIQMTSSYASGKESTTFIEMGKVKDIVINEAIYMQKVIYYLCIL  
LKDPVEPHGISQVVPVFQSAKPRLDCLIEVYRSCQEILAHQKATSTSP

**TR**TRPLE**Q**KLISEEDLAANDILDYKDDDDKV

Tag:	C-Myc/DDK
Predicted MW:	20.9 kDa
Concentration:	>0.05 µg/µL as determined by microplate BCA method
Purity:	> 80% as determined by SDS-PAGE and Coomassie blue staining
Buffer:	25 mM Tris-HCl, 100 mM glycine, pH 7.3, 10% glycerol
Preparation:	Recombinant protein was captured through anti-DDK affinity column followed by conventional chromatography steps.
Note:	For testing in cell culture applications, please filter before use. Note that you may experience some loss of protein during the filtration process.
Storage:	Store at -80°C.
Stability:	Stable for 12 months from the date of receipt of the product under proper storage and handling conditions. Avoid repeated freeze-thaw cycles.
RefSeq:	<u><a href="#">NP_004560</a></u>
Locus ID:	5283
UniProt ID:	<u><a href="#">Q14442</a></u>



[View online »](#)

RefSeq Size: 1439

Cytogenetics: 14q24.1

RefSeq ORF: 564

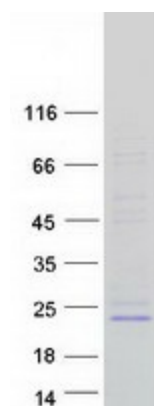
Synonyms: GPI-H

**Summary:** This gene encodes an endoplasmic reticulum associated protein that is involved in glycosylphosphatidylinositol (GPI)-anchor biosynthesis. The GPI anchor is a glycolipid found on many blood cells and which serves to anchor proteins to the cell surface. The protein encoded by this gene is a subunit of the GPI N-acetylglucosaminyl (GlcNAc) transferase that transfers GlcNAc to phosphatidylinositol (PI) on the cytoplasmic side of the endoplasmic reticulum. [provided by RefSeq, Jul 2008]

**Protein Families:** Transmembrane

**Protein Pathways:** Glycosylphosphatidylinositol(GPI)-anchor biosynthesis, Metabolic pathways

### Product images:



Coomassie blue staining of purified PIGH protein (Cat# [TP310028]). The protein was produced from HEK293T cells transfected with PIGH cDNA clone (Cat# [RC210028]) using MegaTran 2.0 (Cat# [TT210002]).