

Product datasheet for **TP310026L**

CCL3 (NM_002983) Human Recombinant Protein

Product data:

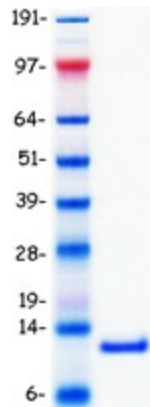
Product Type:	Recombinant Proteins
Description:	Recombinant protein of human chemokine (C-C motif) ligand 3 (CCL3), 1 mg
Species:	Human
Expression Host:	HEK293T
Expression cDNA Clone or AA Sequence:	>RC210026 protein sequence Red =Cloning site Green =Tags(s)
	 MQVSTAALAVLLCTMALCNQFSASLAADTPTACCFSYTSRQIPQNFADYFETSSQCSKPGVIFLTKRSR QVCADPSEEWVQKYVSDLELSA TRTRPLEQKLISEEDLAANDILDYKDDDDKV
Tag:	C-Myc/DDK
Predicted MW:	9.9 kDa
Concentration:	>0.05 µg/µL as determined by microplate BCA method
Purity:	> 80% as determined by SDS-PAGE and Coomassie blue staining
Buffer:	25 mM Tris-HCl, 100 mM glycine, pH 7.3, 10% glycerol
Preparation:	Recombinant protein was captured through anti-DDK affinity column followed by conventional chromatography steps.
Note:	For testing in cell culture applications, please filter before use. Note that you may experience some loss of protein during the filtration process.
Storage:	Store at -80°C.
Stability:	Stable for 12 months from the date of receipt of the product under proper storage and handling conditions. Avoid repeated freeze-thaw cycles.
RefSeq:	NP_002974
Locus ID:	6348
UniProt ID:	P10147 , A0N0R1
RefSeq Size:	813
Cytogenetics:	17q12



[View online »](#)

RefSeq ORF:	276
Synonyms:	G0S19-1; LD78ALPHA; MIP-1-alpha; MIP1A; SCYA3
Summary:	This locus represents a small inducible cytokine. The encoded protein, also known as macrophage inflammatory protein 1 alpha, plays a role in inflammatory responses through binding to the receptors CCR1, CCR4 and CCR5. Polymorphisms at this locus may be associated with both resistance and susceptibility to infection by human immunodeficiency virus type 1.[provided by RefSeq, Sep 2010]
Protein Families:	Druggable Genome, Secreted Protein
Protein Pathways:	Chemokine signaling pathway, Cytokine-cytokine receptor interaction, Toll-like receptor signaling pathway

Product images:



Coomassie blue staining of purified CCL3 protein (Cat# [TP310026]). The protein was produced from HEK293T cells transfected with CCL3 cDNA clone (Cat# [RC210026]) using MegaTran 2.0 (Cat# [TT210002]).