

## Product datasheet for **TP309976**

### Proteasome subunit alpha type 6 (PSMA6) (NM\_002791) Human Recombinant Protein

#### Product data:

|                                       |   |
|---------------------------------------|---|
| Product Type:                         | Recombinant Proteins  |
| Description:                          | Recombinant protein of human proteasome (prosome, macropain) subunit, alpha type, 6 (PSMA6), 20 µg  |
| Species:                              | Human   |
| Expression Host:                      | HEK293T   |
| Expression cDNA Clone or AA Sequence: | >RC209976 protein sequence<br><b>Red</b> =Cloning site <b>Green</b> =Tags(s)  |
|                                       | <br>MSRGSSAGFDRHITIFSPGRLYQVEYAFKAINQGGLTSVAVRGKDCAVIVTQKKVPDKLLDSSTVTHLF<br>KITENIGCVMTGMTADSRSQVQRARYEAANWKYKYGYEIPVDMLCKRIADISQVYTQNAEMRPLGCCMIL<br>IGIDEEQGPQVYKCDPAGYYCGFKATAAGVKQTESTSFLEKKVKKKFDWTFEQTVETAITCLSTVLSIDF<br>KPSEIEVGWVTVENPKFRILTEAEIDAHLVALAERD<br><br><b>TRTRPLEQKLISEEDLAANDILDYKDDDDKV</b> |
| Tag:                                  | C-Myc/DDK   |
| Predicted MW:                         | 27.2 kDa  |
| Concentration:                        | >0.05 µg/µL as determined by microplate BCA method  |
| Purity:                               | > 80% as determined by SDS-PAGE and Coomassie blue staining   |
| Buffer:                               | 25 mM Tris-HCl, 100 mM glycine, pH 7.3, 10% glycerol  |
| Preparation:                          | Recombinant protein was captured through anti-DDK affinity column followed by conventional chromatography steps.  |
| Note:                                 | For testing in cell culture applications, please filter before use. Note that you may experience some loss of protein during the filtration process.  |
| Storage:                              | Store at -80°C.   |
| Stability:                            | Stable for 12 months from the date of receipt of the product under proper storage and handling conditions. Avoid repeated freeze-thaw cycles.   |
| RefSeq:                               | <u><a href="#">NP_002782</a></u>  |
| Locus ID:                             | 5687  |



[View online »](#)

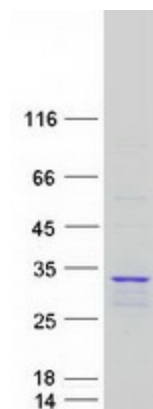
UniProt ID: [P60900](#)  
RefSeq Size: 1091  
Cytogenetics: 14q13.2  
RefSeq ORF: 738  
Synonyms: IOTA; p27K; PROS27

**Summary:** The proteasome is a multicatalytic proteinase complex with a highly ordered ring-shaped 20S core structure. The core structure is composed of 4 rings of 28 non-identical subunits; 2 rings are composed of 7 alpha subunits and 2 rings are composed of 7 beta subunits. Proteasomes are distributed throughout eukaryotic cells at a high concentration and cleave peptides in an ATP/ubiquitin-dependent process in a non-lysosomal pathway. An essential function of a modified proteasome, the immunoproteasome, is the processing of class I MHC peptides. This gene encodes a member of the peptidase T1A family, that is a 20S core alpha subunit. Multiple transcript variants encoding several different isoforms have been found for this gene. A pseudogene has been identified on the Y chromosome. [provided by RefSeq, Aug 2013]

**Protein Families:** Druggable Genome, Protease, Stem cell - Pluripotency

**Protein Pathways:** Proteasome

### Product images:



Coomassie blue staining of purified PSMA6 protein (Cat# TP309976). The protein was produced from HEK293T cells transfected with PSMA6 cDNA clone (Cat# [RC209976]) using MegaTran 2.0 (Cat# [TT210002]).