

Product datasheet for **TP309951**

IRF3 (NM_001571) Human Recombinant Protein

Product data:

Product Type: Recombinant Proteins

Description: Recombinant protein of human interferon regulatory factor 3 (IRF3), 20 µg

Species: Human

Expression Host: HEK293T

Expression cDNA Clone >RC209951 protein sequence

or AA Sequence: Red=Cloning site Green=Tags(s)

MGTPKPRILPWLVSQDLGQLEGVAWVNKSRTFRIPWKHGLRQDAQQEDFGIFQAWAEATGAYVPGRDK
PDLPTWKRNFERSALNRKEGLRLAEDRSKDPHPHKIYEFVNSGVGDFSQPDTSPTDNGGGSTSDTQEDIL
DELLGNMVLAPLPDPGPPSLAVAPEPCPQLRSPSLDNPTFPNLGPSENPLKRLLPGEWEFEVTA FY
RGRQVFQQTISCPEGLRLVGSEVGDRTLPGWVPTLPDGMSLTD RGVMSYVRHVLSCLGGLALWRAGQW
LWAQRLGHCHTYWAVSEELLPSNGHGP DGEVPKDKEGGVFDLGPFIVDLITFTEGSGRSPRYALWFCVGE
SWPQDQPWTKRLVMVKVPTCLRALVEMARVGGASSLENTVDLHISNSHPLSLTSDQYKAYLQDLVEGMD
FQGPGES

TRTRPLEQKLISEEDLAANDILDYKDDDDKV

Tag: C-Myc/DDK

Predicted MW: 47 kDa

Concentration: >0.05 µg/µL as determined by microplate BCA method

Purity: > 80% as determined by SDS-PAGE and Coomassie blue staining

Buffer: 25 mM Tris-HCl, 100 mM glycine, pH 7.3, 10% glycerol

Preparation: Recombinant protein was captured through anti-DDK affinity column followed by conventional chromatography steps.

Note: For testing in cell culture applications, please filter before use. Note that you may experience some loss of protein during the filtration process.

Storage: Store at -80°C.

Stability: Stable for 12 months from the date of receipt of the product under proper storage and handling conditions. Avoid repeated freeze-thaw cycles.

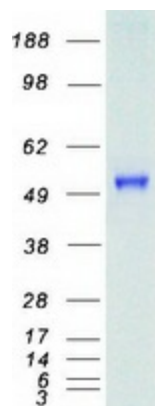
RefSeq: [NP_001562](#)



[View online »](#)

Locus ID:	3661
UniProt ID:	Q14653
RefSeq Size:	1626
Cytogenetics:	19q13.33
RefSeq ORF:	1281
Synonyms:	IIAE7
Summary:	This gene encodes a member of the interferon regulatory transcription factor (IRF) family. The encoded protein is found in an inactive cytoplasmic form that upon serine/threonine phosphorylation forms a complex with CREBBP. This complex translocates to the nucleus and activates the transcription of interferons alpha and beta, as well as other interferon-induced genes. The protein plays an important role in the innate immune response against DNA and RNA viruses. Mutations in this gene are associated with Encephalopathy, acute, infection-induced, herpes-specific, 7. [provided by RefSeq, Sep 2020]
Protein Families:	Druggable Genome, Transcription Factors
Protein Pathways:	Cytosolic DNA-sensing pathway, RIG-I-like receptor signaling pathway, Toll-like receptor signaling pathway

Product images:



Coomassie blue staining of purified IRF3 protein (Cat# TP309951). The protein was produced from HEK293T cells transfected with IRF3 cDNA clone (Cat# [RC209951]) using MegaTran 2.0 (Cat# [TT210002]).