

## Product datasheet for **TP309944**

### INSL3 (NM\_005543) Human Recombinant Protein

#### Product data:

**Product Type:** Recombinant Proteins

**Description:** Recombinant protein of human insulin-like 3 (Leydig cell) (INSL3), 20 µg

**Species:** Human

**Expression Host:** HEK293T

**Expression cDNA Clone or AA Sequence:** >RC209944 protein sequence  
**Red**=Cloning site **Green**=Tags(s)

MDPRLPAWALVLLGPALVFALGPAPTPEMREKLCGHHFVRALVRVCGGPRWSTEARRPAAGGDRELLQWL  
ERRHLLHGLVADSNTLGPGLQPLPQTSHHHRHHRAATNPARYCCLSGCTQDILLTLCPY

**TRTRPLEQKLISEEDLAANDILDYKDDDDKV**

**Tag:** C-Myc/DDK

**Predicted MW:** 14.3 kDa

**Concentration:** >0.05 µg/µL as determined by microplate BCA method

**Purity:** > 80% as determined by SDS-PAGE and Coomassie blue staining

**Buffer:** 25 mM Tris-HCl, 100 mM glycine, pH 7.3, 10% glycerol

**Preparation:** Recombinant protein was captured through anti-DDK affinity column followed by conventional chromatography steps.

**Note:** For testing in cell culture applications, please filter before use. Note that you may experience some loss of protein during the filtration process.

**Storage:** Store at -80°C.

**Stability:** Stable for 12 months from the date of receipt of the product under proper storage and handling conditions. Avoid repeated freeze-thaw cycles.

**RefSeq:** [NP\\_005534](#)

**Locus ID:** 3640

**UniProt ID:** [P51460](#)

**RefSeq Size:** 833

**Cytogenetics:** 19p13.11



[View online »](#)

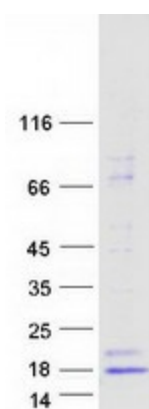
RefSeq ORF: 393

Synonyms: ley-I-L; RLF; RLNL

**Summary:** This gene encodes a member of the insulin-like hormone superfamily. The encoded protein is mainly produced in gonadal tissues. Studies of the mouse counterpart suggest that this gene may be involved in the development of urogenital tract and female fertility. This protein may also act as a hormone to regulate growth and differentiation of gubernaculum, and thus mediating intra-abdominal testicular descent. Mutations in this gene may lead to cryptorchidism. Alternate splicing results in multiple transcript variants. [provided by RefSeq, May 2012]

**Protein Families:** Druggable Genome, Secreted Protein

### Product images:



Coomassie blue staining of purified INSL3 protein (Cat# TP309944). The protein was produced from HEK293T cells transfected with INSL3 cDNA clone (Cat# [RC209944]) using MegaTran 2.0 (Cat# [TT210002]).