

Product datasheet for TP309931

SULT1A4 (NM_001017390) Human Recombinant Protein

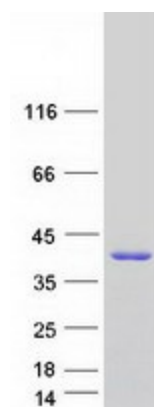
Product data:

Product Type:	Recombinant Proteins
Description:	Recombinant protein of human sulfotransferase family, cytosolic, 1A, phenol-preferring, member 4 (SULT1A4), transcript variant 2, 20 µg
Species:	Human
Expression Host:	HEK293T
Expression cDNA	>RC209931 protein sequence
Clone or AA	Red=Cloning site Green=Tags(s)
Sequence:	<p>MELIQDTSRPPLEYVKGVPLIKYFAEALGPLQSFQARPDDLINTYPKSGTTWVSQILDMIYQGGDLEKC NRAPIYVRVPFLEVNDPGEPSGLETLKDTPPPRLIKSHLPLALLPQTLLDQKVWVYVARNPKDVAVSYY HFHRMEKAHPEPGTWDSFLEKFMAGEVSYGSWYQHVVQEWELSRTHPVLYLFYEDMKENPKREIQKILEF VGRSLPEETMDFMVQHTSFKEMKKNPMTNYTTVPQELMDHSISPFMRKGMAGDWKTTFTVAQNERFDADY AEKMAGCSLSFRSEL</p> <p>TRTRPLEQKLISEEDLAANDILDYKDDDDKV</p>
Tag:	C-Myc/DDK
Predicted MW:	34 kDa
Concentration:	>0.05 µg/µL as determined by microplate BCA method
Purity:	> 80% as determined by SDS-PAGE and Coomassie blue staining
Buffer:	25 mM Tris-HCl, 100 mM glycine, pH 7.3, 10% glycerol
Preparation:	Recombinant protein was captured through anti-DDK affinity column followed by conventional chromatography steps.
Note:	For testing in cell culture applications, please filter before use. Note that you may experience some loss of protein during the filtration process.
Storage:	Store at -80°C.
Stability:	Stable for 12 months from the date of receipt of the product under proper storage and handling conditions. Avoid repeated freeze-thaw cycles.
RefSeq:	NP_001017390
Locus ID:	445329


[View online »](#)

UniProt ID:	<u>P50224</u> , <u>P0DMM9</u> , <u>P0DMN0</u> , <u>Q1ET61</u>
RefSeq Size:	1397
Cytogenetics:	16p11.2
RefSeq ORF:	885
Synonyms:	HAST3; M-PST; ST1A3; ST1A3/ST1A4; ST1A4; STM; TL-PST
Summary:	Sulfotransferase enzymes catalyze the sulfate conjugation of many hormones, neurotransmitters, drugs, and xenobiotic compounds. These cytosolic enzymes are different in their tissue distributions and substrate specificities. The gene structure (number and length of exons) is similar among family members. This gene encodes a phenol sulfotransferase with thermolabile enzyme activity. Four sulfotransferase genes are located on the p arm of chromosome 16, this gene and SULT1A3 arose from a segmental duplication. Read-through transcription exists between this gene and the upstream SLX1B (SLX1 structure-specific endonuclease subunit homolog B) gene that encodes a protein containing GIY-YIG domains. [provided by RefSeq, Nov 2010]
Protein Pathways:	Sulfur metabolism

Product images:



Coomassie blue staining of purified SULT1A4 protein (Cat# TP309931). The protein was produced from HEK293T cells transfected with SULT1A4 cDNA clone (Cat# [RC209931]) using MegaTran 2.0 (Cat# [TT210002]).