

## Product datasheet for **TP309927M**

### **RAB1B (NM\_030981) Human Recombinant Protein**

#### Product data:

Product Type:	Recombinant Proteins
Description:	Recombinant protein of human RAB1B, member RAS oncogene family (RAB1B), 100 µg
Species:	Human
Expression Host:	HEK293T
Expression cDNA Clone or AA Sequence:	>RC209927 protein sequence <b>Red</b> =Cloning site <b>Green</b> =Tags(s)
	 MNPEYDYLFKLLIGDSGVGKSCLLRFADDTYTESYISTIGVDFKIRTIELDGKTIKLIWDTAGQERF RTITSSYYRGAHGIIIVYDVTDQESYANVKQWLQEIDRYASENVNKLVLGNKSDLTTKKVVDNTTAKEFA DSLGIFFLETSAKNATNVEQAFMTMAAEIKKRMGPGAASGGERP NLKIDSTPVKPAGGGCC  <b>TRTRPLEQKLISEEDLAANDILDYKDDDDKV</b>
Tag:	C-Myc/DDK
Predicted MW:	22 kDa
Concentration:	>0.05 µg/µL as determined by microplate BCA method
Purity:	> 80% as determined by SDS-PAGE and Coomassie blue staining
Buffer:	25 mM Tris-HCl, 100 mM glycine, pH 7.3, 10% glycerol
Preparation:	Recombinant protein was captured through anti-DDK affinity column followed by conventional chromatography steps.
Note:	For testing in cell culture applications, please filter before use. Note that you may experience some loss of protein during the filtration process.
Storage:	Store at -80°C.
Stability:	Stable for 12 months from the date of receipt of the product under proper storage and handling conditions. Avoid repeated freeze-thaw cycles.
RefSeq:	<a href="#">NP_112243</a>
Locus ID:	81876
UniProt ID:	<a href="#">Q9H0U4</a>
RefSeq Size:	1955



[View online »](#)

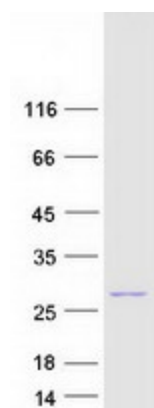
Cytogenetics: 11q13.2

RefSeq ORF: 603

**Summary:** Members of the RAB protein family, such as RAB1B, are low molecular mass monomeric GTPases localized on the cytoplasmic surfaces of distinct membrane-bound organelles. RAB1B functions in the early secretory pathway and is essential for vesicle transport between the endoplasmic reticulum (ER) and Golgi (Chen et al., 1997 [PubMed 9030196]; Alvarez et al., 2003 [PubMed 12802079]).[supplied by OMIM, Jan 2009]

**Protein Families:** Transcription Factors

### Product images:



Coomassie blue staining of purified RAB1B protein (Cat# [TP309927]). The protein was produced from HEK293T cells transfected with RAB1B cDNA clone (Cat# [RC209927]) using MegaTran 2.0 (Cat# [TT210002]).