

## Product datasheet for **TP309927L**

### **RAB1B (NM\_030981) Human Recombinant Protein**

#### Product data:

|                                       |  |
|---------------------------------------|--|
| Product Type:                         | Recombinant Proteins   |
| Description:                          | Recombinant protein of human RAB1B, member RAS oncogene family (RAB1B), 1 mg   |
| Species:                              | Human  |
| Expression Host:                      | HEK293T  |
| Expression cDNA Clone or AA Sequence: | >RC209927 protein sequence<br><b>Red</b> =Cloning site <b>Green</b> =Tags(s)   |
|                                       | MNPEYDYLFKLLIGDSGVGKSCLLRFADDTYTESYISTIGVDFKIRTIELDGKTIKLQIWDTAGQERF<br>RTITSSYYRGAHGIIIVYDVTDQESYANVKQWLQEIDRYASENVNKLVLGKNSDLTTKKVVDNTTAKEFA<br>DSLGIFFLETSAKNATNVEQAFMTMAAEIKKRMGPGAASGGERP NLKIDSTPVKPAGGGCC |
|                                       | <b>TRTRPLEQKLISEEDLAANDILDYKDDDDKV</b>   |
| Tag:                                  | C-Myc/DDK  |
| Predicted MW:                         | 22 kDa   |
| Concentration:                        | >0.05 µg/µL as determined by microplate BCA method   |
| Purity:                               | > 80% as determined by SDS-PAGE and Coomassie blue staining  |
| Buffer:                               | 25 mM Tris-HCl, 100 mM glycine, pH 7.3, 10% glycerol   |
| Preparation:                          | Recombinant protein was captured through anti-DDK affinity column followed by conventional chromatography steps.   |
| Note:                                 | For testing in cell culture applications, please filter before use. Note that you may experience some loss of protein during the filtration process.   |
| Storage:                              | Store at -80°C.  |
| Stability:                            | Stable for 12 months from the date of receipt of the product under proper storage and handling conditions. Avoid repeated freeze-thaw cycles.  |
| RefSeq:                               | <a href="#">NP_112243</a>  |
| Locus ID:                             | 81876  |
| UniProt ID:                           | <a href="#">Q9H0U4</a>   |
| RefSeq Size:                          | 1955   |



[View online »](#)

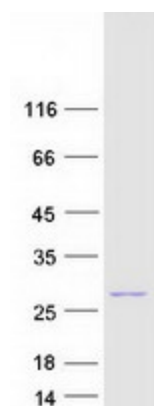
Cytogenetics: 11q13.2

RefSeq ORF: 603

**Summary:** Members of the RAB protein family, such as RAB1B, are low molecular mass monomeric GTPases localized on the cytoplasmic surfaces of distinct membrane-bound organelles. RAB1B functions in the early secretory pathway and is essential for vesicle transport between the endoplasmic reticulum (ER) and Golgi (Chen et al., 1997 [PubMed 9030196]; Alvarez et al., 2003 [PubMed 12802079]).[supplied by OMIM, Jan 2009]

**Protein Families:** Transcription Factors

### Product images:



Coomassie blue staining of purified RAB1B protein (Cat# [TP309927]). The protein was produced from HEK293T cells transfected with RAB1B cDNA clone (Cat# [RC209927]) using MegaTran 2.0 (Cat# [TT210002]).