

## Product datasheet for TP309916L

### RETREG1 (NM\_019000) Human Recombinant Protein

#### Product data:

<b>Product Type:</b>	Recombinant Proteins
<b>Description:</b>	Recombinant protein of human family with sequence similarity 134, member B (FAM134B), transcript variant 2, 1 mg
<b>Species:</b>	Human
<b>Expression Host:</b>	HEK293T
<b>Expression cDNA Clone or AA Sequence:</b>	>RC209916 protein sequence <b>Red</b> =Cloning site <b>Green</b> =Tags(s)
	MPEGEDFGPGKSWEVINSKPDERPRLSHCIAESWMNFSIFLQEMSLFKQQSPGKFLLVCSVCTFFITLG SYIPGVILSYLLLLCAFLCPLFKCNDIGQKIYSKIKSVLLKLDGIGEYINQKKRERSEADKEKSHKDDS ELDFSALCPKISLTVAAKELSVSDTDVSEVSWTDNGTFNLSEGYTPQTDTSDDLDRPSEEVFSRDLSDFP SLENGMGTNDEDELSLGLPTELKRKKEQLDSGHRPSKETQSAAGLTLPLNSDQTFHLMNSNLAGDVITAAV TAAIKDQLEGVQQALSQAAPIPEEDTDTEEGDDFELLDQSELDQIESELGLTQDQEAQAQNKKSSGFLS NLLGGH
	<b>TRTRPLEQKLISEEDLAANDILDYKDDDDKV</b>
<b>Tag:</b>	C-Myc/DDK
<b>Predicted MW:</b>	39.1 kDa
<b>Concentration:</b>	>0.05 µg/µL as determined by microplate BCA method
<b>Purity:</b>	> 80% as determined by SDS-PAGE and Coomassie blue staining
<b>Buffer:</b>	25 mM Tris-HCl, 100 mM glycine, pH 7.3, 10% glycerol
<b>Preparation:</b>	Recombinant protein was captured through anti-DDK affinity column followed by conventional chromatography steps.
<b>Note:</b>	For testing in cell culture applications, please filter before use. Note that you may experience some loss of protein during the filtration process.
<b>Storage:</b>	Store at -80°C.
<b>Stability:</b>	Stable for 12 months from the date of receipt of the product under proper storage and handling conditions. Avoid repeated freeze-thaw cycles.
<b>RefSeq:</b>	<u><a href="#">NP_061873</a></u>



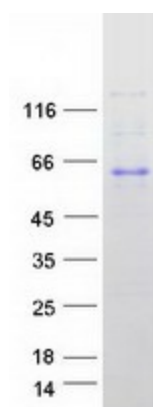
[View online »](#)

Locus ID: 54463  
UniProt ID: [Q9H6L5](#)  
RefSeq Size: 3184  
Cytogenetics: 5p15.1  
RefSeq ORF: 1068  
Synonyms: FAM134B; JK-1; JK1

**Summary:** The protein encoded by this gene is a cis-Golgi transmembrane protein that may be necessary for the long-term survival of nociceptive and autonomic ganglion neurons. Mutations in this gene are a cause of hereditary sensory and autonomic neuropathy type IIB (HSAN IIB), and this gene may also play a role in susceptibility to vascular dementia. Alternatively spliced transcript variants encoding multiple isoforms have been observed for this gene. [provided by RefSeq, Nov 2011]

**Protein Families:** Transmembrane

### Product images:



Coomassie blue staining of purified RETREG1 protein (Cat# [TP309916]). The protein was produced from HEK293T cells transfected with RETREG1 cDNA clone (Cat# [RC209916]) using MegaTran 2.0 (Cat# [TT210002]).