

## Product datasheet for **TP309892L**

### FAM53A (NM\_001013622) Human Recombinant Protein

#### Product data:

Product Type:	Recombinant Proteins
Description:	Recombinant protein of human family with sequence similarity 53, member A (FAM53A), 1 mg
Species:	Human
Expression Host:	HEK293T
Expression cDNA Clone or AA Sequence:	>RC209892 protein sequence <b>Red</b> =Cloning site <b>Green</b> =Tags(s)

MVTLITEKLQSQSLDDLTKAEAGPLQYSAETLNKSGRFLPLELNDQSPWKVFSGGPPVRSQAATGPDFS  
FLPGLSAAAHTMGLQWQPQSPRPGAGLGAASTVDPSESTGSSTAPPTKRHCRSLSEPEELVRCRSPWRPG  
SSKVVTPVSKRRCDSGGSATRQGSPGAVLPRSAVWSTGPTSPATPRSSASGGFVDSSEGSAGSGLWCS  
AESCLPSTRRRPQLSQRERLAGAGTLPWASSPTSTPALGGRRGLLRCRSPCVLGSKRSRKRREEDA  
RWTRPSLDFLKMTQTLKNSKSLCSLNYEDDEDDEDDTPVKTVLSSPCDSRGLPGITMPGCSQRGLRTSPVHP  
NLWASRESVTSDGSRSSGDPRDGDGDSVGEVFPFRRARWELDLQIENN

**TRTRPLEQKLISEEDLAANDILDYKDDDDKV**

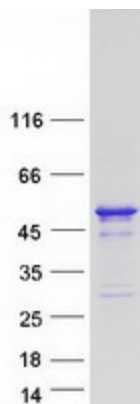
Tag:	C-Myc/DDK
Predicted MW:	42.4 kDa
Concentration:	>0.05 µg/µL as determined by microplate BCA method
Purity:	> 80% as determined by SDS-PAGE and Coomassie blue staining
Buffer:	25 mM Tris-HCl, 100 mM glycine, pH 7.3, 10% glycerol
Preparation:	Recombinant protein was captured through anti-DDK affinity column followed by conventional chromatography steps.
Note:	For testing in cell culture applications, please filter before use. Note that you may experience some loss of protein during the filtration process.
Storage:	Store at -80°C.
Stability:	Stable for 12 months from the date of receipt of the product under proper storage and handling conditions. Avoid repeated freeze-thaw cycles.
RefSeq:	<a href="#">NP_001013644</a>
Locus ID:	152877



[View online »](#)

UniProt ID:	<a href="#">Q6NSI3</a>
RefSeq Size:	2807
Cytogenetics:	4p16.3
RefSeq ORF:	1194
Synonyms:	DNTNP
Summary:	May play an important role in neural development; the dorsomedial roof of the third ventricle. [UniProtKB/Swiss-Prot Function]

### Product images:



Coomassie blue staining of purified FAM53A protein (Cat# [TP309892]). The protein was produced from HEK293T cells transfected with FAM53A cDNA clone (Cat# [RC209892]) using MegaTran 2.0 (Cat# [TT210002]).