

Product datasheet for **TP309887L**

C22orf13 (GUCD1) (NM_031444) Human Recombinant Protein

Product data:

Product Type:	Recombinant Proteins
Description:	Recombinant protein of human chromosome 22 open reading frame 13 (C22orf13), 1 mg
Species:	Human
Expression Host:	HEK293T
Expression cDNA Clone or AA Sequence:	>RC209887 protein sequence Red =Cloning site Green =Tags(s)

MRTEAEAAGPPLEPGDFVQLPVPVIQQLYHWDCGLACSRMVLRYLGQLDDSEFERALQKLQLTRSIWTID
LAYLMHHFVGVRHRFCTQTLGVDKGYKNQSFYRKHFDEETRVNQLFAQAKACKVLVEKCTSVSKDIAHL
AQGHVAIVLVNSGVLHCDLCSSPVKYCCFTPSGHHCF CRTPDYQGHFIVLRGYNRATGCIFYNNPAYADR
MCSTSISNFEEARTSYGTDEDILFVYLD

TRTRPLEQKLISEEDLAANDILDYKDDDDKV

Tag:	C-Myc/DDK
Predicted MW:	27 kDa
Concentration:	>0.05 µg/µL as determined by microplate BCA method
Purity:	> 80% as determined by SDS-PAGE and Coomassie blue staining
Buffer:	25 mM Tris-HCl, 100 mM glycine, pH 7.3, 10% glycerol
Preparation:	Recombinant protein was captured through anti-DDK affinity column followed by conventional chromatography steps.
Note:	For testing in cell culture applications, please filter before use. Note that you may experience some loss of protein during the filtration process.
Storage:	Store at -80°C.
Stability:	Stable for 12 months from the date of receipt of the product under proper storage and handling conditions. Avoid repeated freeze-thaw cycles.
RefSeq:	<u>NP_113632</u>
Locus ID:	83606
UniProt ID:	<u>Q96NT3</u>



[View online »](#)

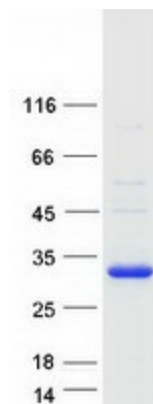
RefSeq Size: 3630

Cytogenetics: 22q11.23

RefSeq ORF: 717

Synonyms: C22orf13; LLN4

Product images:



Coomassie blue staining of purified GUCD1 protein (Cat# [TP309887]). The protein was produced from HEK293T cells transfected with GUCD1 cDNA clone (Cat# [RC209887]) using MegaTran 2.0 (Cat# [TT210002]).