

Product datasheet for **TP309884M**

B3GALTL (B3GLCT) (NM_194318) Human Recombinant Protein

Product data:

Product Type: Recombinant Proteins

Description: Recombinant protein of human beta 1,3-galactosyltransferase-like (B3GALTL), 100 µg

Species: Human

Expression Host: HEK293T

Expression cDNA Clone or AA Sequence: >RC209884 protein sequence
Red=Cloning site **Green**=Tags(s)

MRPPACWWLLAPPALLALLTCSLAFGLASEDTKKEVKQSQDLEKSGISRKNDIDLKGIVFVIQSQSNSFH
AKRAEQLKKSILKQAADLTQELPSVLLHQLAKQEGAWTILPLLPHFSVTYSRNSSWIFFCEEETRIQIP
KLETLRRYDPSKEWFLGKALHDEEATIIHHYAFSENPTVFKYPDFAAGWALSIPLVNKLTKRLKSESLK
SDFTIDLKHEIALYIWDKGGGPPLTPVPEFCTNDVDFYCATTFHSLPLCRKPKVKKKIDIFVAVKTCCKFH
GDRMPIVKQTWESQASLIEYSDYTENSIPTVDLGPNTDRGHCGKTFAILERFLNRSQDKTAWLVIVDD
DTLISISRLQHLLSCYDSGKPVFLGERYGYGLTGGYSYITGGGGMVFSREAVRRLASKCRCYSNDAPD
DMVLGMCFSGLGIPVTHSPLFHQARPVDYPKDYLSHQVPIFSHKHWNIDPVKVYFTWLAPSDDEDKARQET
QKGFREEL

TRTRPLEQKLISEEDLAANDILDYKDDDDKV

Tag: C-Myc/DDK

Predicted MW: 56.4 kDa

Concentration: >0.05 µg/µL as determined by microplate BCA method

Purity: > 80% as determined by SDS-PAGE and Coomassie blue staining

Buffer: 25 mM Tris-HCl, 100 mM glycine, pH 7.3, 10% glycerol

Preparation: Recombinant protein was captured through anti-DDK affinity column followed by conventional chromatography steps.

Note: For testing in cell culture applications, please filter before use. Note that you may experience some loss of protein during the filtration process.

Storage: Store at -80°C.

Stability: Stable for 12 months from the date of receipt of the product under proper storage and handling conditions. Avoid repeated freeze-thaw cycles.



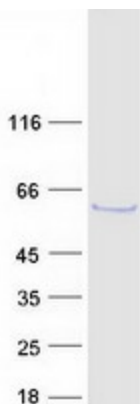
[View online >](#)

RefSeq:	NP_919299
Locus ID:	145173
UniProt ID:	Q6Y288
RefSeq Size:	4221
Cytogenetics:	13q12.3
RefSeq ORF:	1494
Synonyms:	B3GALTL; B3Glc-T; B3GTL; beta3Glc-T; Gal-T

Summary: The protein encoded by this gene is a beta-1,3-glucosyltransferase that transfers glucose to O-linked fucosylglycans on thrombospondin type-1 repeats (TSRs) of several proteins. The encoded protein is a type II membrane protein. Defects in this gene are a cause of Peters-plus syndrome (PPS).[provided by RefSeq, Mar 2009]

Protein Families: Transmembrane

Product images:



Coomassie blue staining of purified B3GLCT protein (Cat# [TP309884]). The protein was produced from HEK293T cells transfected with B3GLCT cDNA clone (Cat# [RC209884]) using MegaTran 2.0 (Cat# [TT210002]).