

Product datasheet for TP309877

NAPE PLD (NAPEPLD) (NM_198990) Human Recombinant Protein

Product data:

Product Type:	Recombinant Proteins
Description:	Recombinant protein of human N-acyl phosphatidylethanolamine phospholipase D (NAPEPLD), transcript variant 2, 20 µg
Species:	Human
Expression Host:	HEK293T
Expression cDNA Clone or AA Sequence:	>RC209877 protein sequence Red =Cloning site Green =Tags(s)
	MDENESNQSLMTSSQYPKEAVRKRQNSARNSGASDSSRFSRKSFKLDYRLEEDVTKSKKGDGRFVNPWP TWKNPSIPNVLRWLIMEKDHSSVPSSKEELDKELPVLKPYFITNPEEAGVREAGLRVTWLGHATVMVEMD ELIFLTDPIFSSRASPSQYMGPKRFRSPCTISELPPIDAVLISHNHYDHLDYNSVIALNERFGNELRWF VPLGLLDWMQKCGCENVIELDWEENCVPGHDKVTFVFTPSQHWCKRTLMDDNKVLWGSWSVLPWNRFF FAGDTGYCPAFEEIGKRFPGFDLAAIPIGAYEPRWFMKYQHVDPEEAVRIHTDVQTKKSMAIHWGTFALA NEHYLEPPVKLNEALERYGLNAEDFFVLKHGESRYLNNNDENF
	TRTRPLEQKLISEEDLAANDILDYKDDDDKV
Tag:	C-Myc/DDK
Predicted MW:	45.4 kDa
Concentration:	>0.05 µg/µL as determined by microplate BCA method
Purity:	> 80% as determined by SDS-PAGE and Coomassie blue staining
Buffer:	25 mM Tris-HCl, 100 mM glycine, pH 7.3, 10% glycerol
Preparation:	Recombinant protein was captured through anti-DDK affinity column followed by conventional chromatography steps.
Note:	For testing in cell culture applications, please filter before use. Note that you may experience some loss of protein during the filtration process.
Storage:	Store at -80°C.
Stability:	Stable for 12 months from the date of receipt of the product under proper storage and handling conditions. Avoid repeated freeze-thaw cycles.
RefSeq:	<u>NP_945341</u>



[View online »](#)

Locus ID: 222236

UniProt ID: [Q6IQ20](#)

RefSeq Size: 5062

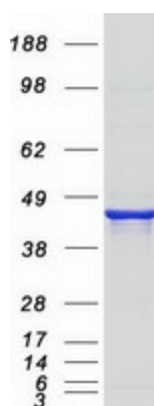
Cytogenetics: 7q22.1

RefSeq ORF: 1179

Synonyms: C7orf18; FMP30; NAPE-PLD

Summary: NAPEPLD is a phospholipase D type enzyme that catalyzes the release of N-acylethanolamine (NAE) from N-acyl-phosphatidylethanolamine (NAPE) in the second step of the biosynthesis of N-acylethanolamine (Okamoto et al., 2004 [PubMed 14634025]).[supplied by OMIM, Oct 2008]

Product images:



Coomassie blue staining of purified NAPEPLD protein (Cat# TP309877). The protein was produced from HEK293T cells transfected with NAPEPLD cDNA clone (Cat# [RC209877]) using MegaTran 2.0 (Cat# [TT210002]).