

Product datasheet for **TP309871M**

OSTM1 (NM_014028) Human Recombinant Protein

Product data:

Product Type:	Recombinant Proteins
Description:	Recombinant protein of human osteopetrosis associated transmembrane protein 1 (OSTM1), 100 µg
Species:	Human
Expression Host:	HEK293T
Expression cDNA Clone or AA Sequence:	>RC209871 protein sequence Red =Cloning site Green =Tags(s)

MEPGPTAAQRRCSLPPWLPLGLLLWGLALGALPFGSSPHRVFHDLLSEQQLLEVEDLSLSLLQGGGLGP
LSLPPDLPLDPECRELLLDFASSAELTGCLVRSARPVRLCQTCYPLFQQVSKMDNISRAAGNTSESQ
SCARSLLMADRMQIVVILSEFFNTTWQEANCANCLTNNSEELSNSTVYFLNLFNHTLTCFEHNLQGNAHS
LLQTKNYSEVCKNCREAYKTLSSLYSEMQKMNELENKAEPGTHLCIDVEDAMNITRKLWSRTFNCSVPCS
DTVPVIAVSVFILFLPVVFLSSFLHSEQKKRKLILPKRLKSSTSFANIQENSN

TRTRPLEQKLISEEDLAANDILDYKDDDDKV

Tag:	C-Myc/DDK
Predicted MW:	37.1 kDa
Concentration:	>0.05 µg/µL as determined by microplate BCA method
Purity:	> 80% as determined by SDS-PAGE and Coomassie blue staining
Buffer:	25 mM Tris-HCl, 100 mM glycine, pH 7.3, 10% glycerol
Preparation:	Recombinant protein was captured through anti-DDK affinity column followed by conventional chromatography steps.
Note:	For testing in cell culture applications, please filter before use. Note that you may experience some loss of protein during the filtration process.
Storage:	Store at -80°C.
Stability:	Stable for 12 months from the date of receipt of the product under proper storage and handling conditions. Avoid repeated freeze-thaw cycles.
RefSeq:	NP_054747
Locus ID:	28962



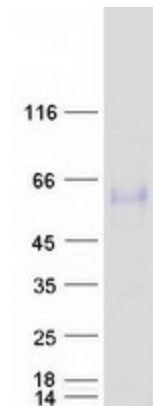
[View online »](#)

UniProt ID: [Q86WC4](#)
RefSeq Size: 4467
Cytogenetics: 6q21
RefSeq ORF: 1002
Synonyms: GIPN; GL; HSPC019; OPTB5

Summary: This gene encodes a protein that may be involved in the degradation of G proteins via the ubiquitin-dependent proteasome pathway. The encoded protein binds to members of subfamily A of the regulator of the G-protein signaling (RGS) family through an N-terminal leucine-rich region. This protein also has a central RING finger-like domain and E3 ubiquitin ligase activity. This protein is highly conserved from flies to humans. Defects in this gene may cause the autosomal recessive, infantile malignant form of osteopetrosis. [provided by RefSeq, Jul 2008]

Protein Families: Transmembrane

Product images:



Coomassie blue staining of purified OSTM1 protein (Cat# [TP309871]). The protein was produced from HEK293T cells transfected with OSTM1 cDNA clone (Cat# [RC209871]) using MegaTran 2.0 (Cat# [TT210002]).