

## Product datasheet for **TP309847M**

### Hsp47 (SERPINH1) (NM\_001235) Human Recombinant Protein

#### Product data:

**Product Type:** Recombinant Proteins  
**Description:** Recombinant protein of human serpin peptidase inhibitor, clade H (heat shock protein 47), member 1, (collagen binding protein 1) (SERPINH1), 100 µg

**Species:** Human

**Expression Host:** HEK293T

**Expression cDNA Clone or AA Sequence:** >RC209847 protein sequence  
**Red**=Cloning site **Green**=Tags(s)

MRSLLLLSAFCLLEAALAAEVKKPAAAAAPGTAEKLSPKAATLAERSAGLAFSLYQAMAKDQAVENILVS  
PVVASSLGLVSLGGKATTASQAKAVLSAEQLRDEEVHAGLGELLRSLNSTARNVTWKLGSRLYGPSSV  
SFADDFVRSSKQHYNCEHSKINFRDKRSALQSINEWAAQTDDGKLPVTKDVERTDGALLVNMFFKPHW  
DEKFHHKMVDNRGFMVTRSYTVGVMHRTGLYNYDDEKEKLQIVEMPLAHKLSLIIFMPHHVEPLER  
LEKLLTKEQLKIWMGKMQKKAVALSLPKGVVEVTHDLQKHLAGLGLTEAIDKNKADLSRMSGKDKDLYLAS  
VFHATAFELDTDGNPFDQDIYGREELRSPKLFYADHPFIFLVRDTQSGSLLFIGRLVRPKGDKMRDEL

**TRTRPLEQKLISEEDLAANDILDYKDDDDKV**

**Tag:** C-Myc/DDK

**Predicted MW:** 44.5 kDa

**Concentration:** >0.05 µg/µL as determined by microplate BCA method

**Purity:** > 80% as determined by SDS-PAGE and Coomassie blue staining

**Buffer:** 25 mM Tris-HCl, 100 mM glycine, pH 7.3, 10% glycerol

**Preparation:** Recombinant protein was captured through anti-DDK affinity column followed by conventional chromatography steps.

**Note:** For testing in cell culture applications, please filter before use. Note that you may experience some loss of protein during the filtration process.

**Storage:** Store at -80°C.

**Stability:** Stable for 12 months from the date of receipt of the product under proper storage and handling conditions. Avoid repeated freeze-thaw cycles.

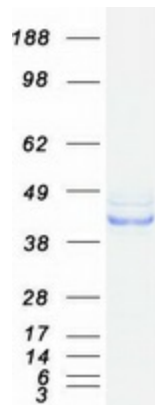
**RefSeq:** [NP\\_001226](#)



[View online »](#)

Locus ID:	871
UniProt ID:	<a href="#">P50454</a> , <a href="#">A0A024R5K8</a>
RefSeq Size:	2289
Cytogenetics:	11q13.5
RefSeq ORF:	1254
Synonyms:	AsTP3; CBP1; CBP2; gp46; HSP47; OI10; PIG14; PPRM; RA-A47; SERPINH2
Summary:	This gene encodes a member of the serpin superfamily of serine proteinase inhibitors. The encoded protein is localized to the endoplasmic reticulum and plays a role in collagen biosynthesis as a collagen-specific molecular chaperone. Autoantibodies to the encoded protein have been found in patients with rheumatoid arthritis. Expression of this gene may be a marker for cancer, and nucleotide polymorphisms in this gene may be associated with preterm birth caused by preterm premature rupture of membranes. Alternatively spliced transcript variants have been observed for this gene, and a pseudogene of this gene is located on the short arm of chromosome 9. [provided by RefSeq, May 2011]
Protein Families:	Druggable Genome

### Product images:



Coomassie blue staining of purified SERPINH1 protein (Cat# [TP309847]). The protein was produced from HEK293T cells transfected with SERPINH1 cDNA clone (Cat# [RC209847]) using MegaTran 2.0 (Cat# [TT210002]).