

Product datasheet for **TP309847L**

Hsp47 (SERPINH1) (NM_001235) Human Recombinant Protein

Product data:

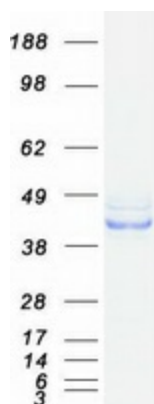
Product Type:	Recombinant Proteins
Description:	Recombinant protein of human serpin peptidase inhibitor, clade H (heat shock protein 47), member 1, (collagen binding protein 1) (SERPINH1), 1 mg
Species:	Human
Expression Host:	HEK293T
Expression cDNA Clone or AA Sequence:	>RC209847 protein sequence Red =Cloning site Green =Tags(s)
	<p>MRSLLLLSAFCLLEAALAAEVKKPAAAAAPGTAEKLSPKAATLAERSAGLAFLSYQAMAKDQAVENILVS PVVASSLGLVSLGGKATTASQAKAVLSAEQLRDEEVHAGLGELLRSLNSTARNVTWKLGSRLYGPSSV SFADDFVRSSKQHYNCEHSKINFRDKRSALQSINEWAAQTTDGKLPEVTKDVERTDGALLVNAMFFKPH W DEKFHHKMVDNRGFMVTRS YTVGVMMMHRTGLYNYDDEKEKLQIVEMPLAHKLSSLIIFMPHHVEPLE R LEKLLTKEQLKIWMGKMQKKAVAI SLPGVVEVTHDLQKHLAGLGLTEAIDKNKADLSRMSGKKDLYLAS VFHATAFELDTDGNPFDQDIYGREELRSPKLFYADHPFIFLVRDTQSGSLLFIGRLVRPKGDKMRDEL</p> <p>TRTRPLEQKLISEEDLAANDILDYKDDDDKV</p>
Tag:	C-Myc/DDK
Predicted MW:	44.5 kDa
Concentration:	>0.05 µg/µL as determined by microplate BCA method
Purity:	> 80% as determined by SDS-PAGE and Coomassie blue staining
Buffer:	25 mM Tris-HCl, 100 mM glycine, pH 7.3, 10% glycerol
Preparation:	Recombinant protein was captured through anti-DDK affinity column followed by conventional chromatography steps.
Note:	For testing in cell culture applications, please filter before use. Note that you may experience some loss of protein during the filtration process.
Storage:	Store at -80°C.



[View online »](#)

Stability:	Stable for 12 months from the date of receipt of the product under proper storage and handling conditions. Avoid repeated freeze-thaw cycles.
RefSeq:	NP_001226
Locus ID:	871
UniProt ID:	P50454
RefSeq Size:	2289
Cytogenetics:	11q13.5
RefSeq ORF:	1254
Synonyms:	AsTP3; CBP1; CBP2; gp46; HSP47; OI10; PIG14; PPR0M; RA-A47; SERPINH2
Summary:	This gene encodes a member of the serpin superfamily of serine proteinase inhibitors. The encoded protein is localized to the endoplasmic reticulum and plays a role in collagen biosynthesis as a collagen-specific molecular chaperone. Autoantibodies to the encoded protein have been found in patients with rheumatoid arthritis. Expression of this gene may be a marker for cancer, and nucleotide polymorphisms in this gene may be associated with preterm birth caused by preterm premature rupture of membranes. Alternatively spliced transcript variants have been observed for this gene, and a pseudogene of this gene is located on the short arm of chromosome 9. [provided by RefSeq, May 2011]
Protein Families:	Druggable Genome

Product images:



Coomassie blue staining of purified SERPINH1 protein (Cat# [TP309847]). The protein was produced from HEK293T cells transfected with SERPINH1 cDNA clone (Cat# [RC209847]) using MegaTran 2.0 (Cat# [TT210002]).