

## Product datasheet for **TP309837M**

### **RHOB (NM\_004040) Human Recombinant Protein**

#### Product data:

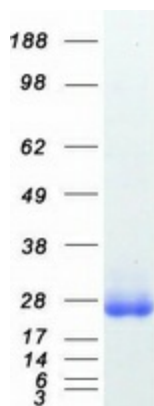
Product Type:	Recombinant Proteins
Description:	Recombinant protein of human ras homolog gene family, member B (RHOB), 100 µg
Species:	Human
Expression Host:	HEK293T
Expression cDNA Clone or AA Sequence:	>RC209837 protein sequence <b>Red</b> =Cloning site <b>Green</b> =Tags(s)
	MAAIRKKLVVVGDGACGKTCLLIVFSKDEFPEVYVPTVFENYVADIEVDGKQVELALWDTAGQEDYDRLR PLSYPD TDVILMCFSDSPDSLENIPEKWWPEVKHFPCNPVPIILVANKKDLRSDEHVRTELARMKQEPVR TDDGRAMAVRIQAYDYLECSAKTKEGVREVFETATRAALQKRYGSQNGCINCKVL
	<b>TRTRPLEQKLISEEDLAANDILDYKDDDDKV</b>
Tag:	C-Myc/DDK
Predicted MW:	21.9 kDa
Concentration:	>0.05 µg/µL as determined by microplate BCA method
Purity:	> 80% as determined by SDS-PAGE and Coomassie blue staining
Buffer:	25 mM Tris-HCl, 100 mM glycine, pH 7.3, 10% glycerol
Preparation:	Recombinant protein was captured through anti-DDK affinity column followed by conventional chromatography steps.
Note:	For testing in cell culture applications, please filter before use. Note that you may experience some loss of protein during the filtration process.
Storage:	Store at -80°C.
Stability:	Stable for 12 months from the date of receipt of the product under proper storage and handling conditions. Avoid repeated freeze-thaw cycles.
RefSeq:	<u><a href="#">NP_004031</a></u>
Locus ID:	388
UniProt ID:	<u><a href="#">P62745</a></u>
RefSeq Size:	2384



[View online »](#)

<b>Cytogenetics:</b>	2p24.1
<b>RefSeq ORF:</b>	588
<b>Synonyms:</b>	ARH6; ARHB; MST081; MSTP081; RHOH6
<b>Summary:</b>	Mediates apoptosis in neoplastically transformed cells after DNA damage. Not essential for development but affects cell adhesion and growth factor signaling in transformed cells. Plays a negative role in tumorigenesis as deletion causes tumor formation. Involved in intracellular protein trafficking of a number of proteins. Targets PKN1 to endosomes and is involved in trafficking of the EGF receptor from late endosomes to lysosomes. Also required for stability and nuclear trafficking of AKT1/AKT which promotes endothelial cell survival during vascular development. Serves as a microtubule-dependent signal that is required for the myosin contractile ring formation during cell cycle cytokinesis. Required for genotoxic stress-induced cell death in breast cancer cells.[UniProtKB/Swiss-Prot Function]
<b>Protein Families:</b>	Druggable Genome

### Product images:



Coomassie blue staining of purified RHOB protein (Cat# [TP309837]). The protein was produced from HEK293T cells transfected with RHOB cDNA clone (Cat# [RC209837]) using MegaTran 2.0 (Cat# [TT210002]).