

## Product datasheet for **TP309837L**

### **RHOB (NM\_004040) Human Recombinant Protein**

#### Product data:

**Product Type:** Recombinant Proteins

**Description:** Recombinant protein of human ras homolog gene family, member B (RHOB), 1 mg

**Species:** Human

**Expression Host:** HEK293T

**Expression cDNA Clone  
or AA Sequence:** >RC209837 protein sequence  
**Red**=Cloning site **Green**=Tags(s)

MAAIRKKLVVWGDGACGKTCLLIVFSKDEFPEVVVPTVFENYVADIEVDGKQVELALWDTAGQEDYDRLR  
PLSYPD TDVILMCFVSDSPDSLENIPEKWVPEVKHFCPNVPIILVANKKDLRSDEHVRTELARMKQEPVR  
TDDGRAMAVRIQAYDYLECSAKTKEGVREVFETATRAALQKRYGSQNGCINCKVL

**TRTRPLEQKLISEEDLAANDILDYKDDDDKV**

**Tag:** C-Myc/DDK

**Predicted MW:** 21.9 kDa

**Concentration:** >0.05 µg/µL as determined by microplate BCA method

**Purity:** > 80% as determined by SDS-PAGE and Coomassie blue staining

**Buffer:** 25 mM Tris-HCl, 100 mM glycine, pH 7.3, 10% glycerol

**Preparation:** Recombinant protein was captured through anti-DDK affinity column followed by conventional chromatography steps.

**Note:** For testing in cell culture applications, please filter before use. Note that you may experience some loss of protein during the filtration process.

**Storage:** Store at -80°C.

**Stability:** Stable for 12 months from the date of receipt of the product under proper storage and handling conditions. Avoid repeated freeze-thaw cycles.

**RefSeq:** [NP\\_004031](#)

**Locus ID:** 388

**UniProt ID:** [P62745](#)

**RefSeq Size:** 2384



[View online »](#)

Cytogenetics: 2p24.1

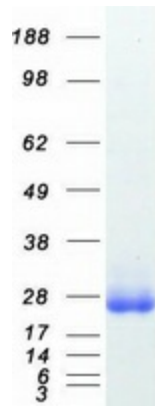
RefSeq ORF: 588

Synonyms: ARH6; ARHB; MST081; MSTP081; RHOH6

**Summary:** Mediates apoptosis in neoplastically transformed cells after DNA damage. Not essential for development but affects cell adhesion and growth factor signaling in transformed cells. Plays a negative role in tumorigenesis as deletion causes tumor formation. Involved in intracellular protein trafficking of a number of proteins. Targets PKN1 to endosomes and is involved in trafficking of the EGF receptor from late endosomes to lysosomes. Also required for stability and nuclear trafficking of AKT1/AKT which promotes endothelial cell survival during vascular development. Serves as a microtubule-dependent signal that is required for the myosin contractile ring formation during cell cycle cytokinesis. Required for genotoxic stress-induced cell death in breast cancer cells.[UniProtKB/Swiss-Prot Function]

**Protein Families:** Druggable Genome

### Product images:



Coomassie blue staining of purified RHOB protein (Cat# [TP309837]). The protein was produced from HEK293T cells transfected with RHOB cDNA clone (Cat# [RC209837]) using MegaTran 2.0 (Cat# [TT210002]).