

Product datasheet for TP309831M

LRR32 (NM_005512) Human Recombinant Protein

Product data:

Product Type:	Recombinant Proteins
Description:	Recombinant protein of human leucine rich repeat containing 32 (LRR32), transcript variant 1, 100 µg
Species:	Human
Expression Host:	HEK293T
Expression cDNA Clone or AA Sequence:	>RC209831 protein sequence Red=Cloning site Green=Tags(s)

MRPQILLLLALLTLGLAAQHQDKVPCKMVDKKVSCQVLGLLQVPSVLPDPTETLDLSGNQLRSILASPLG
FYTALRHLDLSTNEISFLQPGAFQALHLEHLSLAHNRLAMATALSAGGLGPLPRVTSLDLSGNSLYSGL
LERLLGEAPSLHTLSLAENSLTRLRHTFRDMPALEQLDLHSNVLMMDIEDGAFEGPLRHLNLSRNSLT
CISDFSLQQLRVLDLSCNSIEAFQTASQPQAEFQLTWLDLRENKLLHFPDLAALPRIYLNLSNLIIRLP
TGPPQDSKGIHAPSEGWSALPLSAPSGNASGRPLSLLNLDLSYNEIELIPDSFLEHLTSLCFLNLSRNC
LRTFEARRLGSLPCLMLLDLSHNALETLELGARALGSLRTLLQGNALRDLPYTFANLASLQRLNLQGN
RVSPCGGPDEPGSGCVAFSGITSLRSLSLVDNEIELLRAGAFHTPLTELDLSSNPGLVATGALGGLE
ASLEVLALQGNGLMVLQVDLPCFICKRLNLAENRSLHLPAAWTQAVSLEVLDRNNSFSLPPGSAMGGLE
TSLRRLYLQGNPLSCCGNGWLAAQLHQGRVDVDTQDLICRFSSQEEVSLSHVRPEDCEKGGGLKNINLII
ILTFILVSAILLTTLAACCCVRRQKFNQYKA

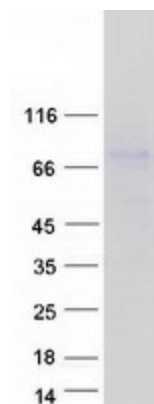
SGPTRTRPLEQKLISEEDLAANDILDYKDDDDKV

Tag:	C-Myc/DDK
Predicted MW:	69.9 kDa
Concentration:	>0.05 µg/µL as determined by microplate BCA method
Purity:	> 80% as determined by SDS-PAGE and Coomassie blue staining
Buffer:	25 mM Tris-HCl, 100 mM glycine, pH 7.3, 10% glycerol
Preparation:	Recombinant protein was captured through anti-DDK affinity column followed by conventional chromatography steps.
Note:	For testing in cell culture applications, please filter before use. Note that you may experience some loss of protein during the filtration process.
Storage:	Store at -80°C.



[View online »](#)

Stability:	Stable for 12 months from the date of receipt of the product under proper storage and handling conditions. Avoid repeated freeze-thaw cycles.
RefSeq:	<u>NP_005503</u>
Locus ID:	2615
UniProt ID:	<u>Q14392, A0A024R5J7</u>
RefSeq Size:	4327
Cytogenetics:	11q13.5
RefSeq ORF:	1986
Synonyms:	CPPRDD; D11S833E; GARP
Summary:	This gene encodes a type I membrane protein which contains 20 leucine-rich repeats. Alterations in the chromosomal region 11q13-11q14 are involved in several pathologies. [provided by RefSeq, Jul 2008]
Protein Families:	Transmembrane

Product images:

Coomassie blue staining of purified LRRC32 protein (Cat# [TP309831]). The protein was produced from HEK293T cells transfected with LRRC32 cDNA clone (Cat# [RC209831]) using MegaTran 2.0 (Cat# [TT210002]).