

## Product datasheet for TP309827M

### LOK (STK10) (NM\_005990) Human Recombinant Protein

#### Product data:

**Product Type:** Recombinant Proteins  
**Description:** Recombinant protein of human serine/threonine kinase 10 (STK10), 100 µg  
**Species:** Human  
**Expression Host:** HEK293T  
**Expression cDNA Clone or AA Sequence:** >RC209827 protein sequence  
**Red**=Cloning site **Green**=Tags(s)

MAFANFRIRLRLSTFEKRKSREYEHVRRDLDPNEVWEIVGELGDGAFGKVKAKNKETGALVAAKVIETK  
 S E E E L E D Y I V E I E I L A T C D H P Y I V K L L G A Y Y H D G K L W I M I E F C P G G A V D A I M L E L D R G L T E P Q I Q E V C R Q  
 M L E A L N F L H S K R I I H R D L K A G N V L M T L E G D I R L A D F G V S A K N L K T L Q K R D S F I G T P Y W M A P E V M C E T M K  
 D T P Y D Y K A D I W S L G I T L I E M A Q I E P P H H E L N P M R V L L K I A K S D P P T L L T P S K W S V E F R D F L K I A L D K N P E  
 T R P S A A Q L L E H P F V S S I T S N K A L R E L V A E A K A E V M E G I E D G R D E G E E E D A V D A A S T L E N H T Q N S E V S P P  
 S L N A D K P L E E S P S T P L A P S Q S Q D S V N E P C S Q P S G D R S L Q T T S P P V V A P G N E N G L A V P V P L R K S R P V S M D A  
 R I Q V A Q E K Q V A E Q G G D L S P A A N R S Q K A S Q S R P N S S A E T L G G E K L A N G S L E P P A Q A A P G P S K R D S D C S S L  
 C T S E S M D Y G T N L S T D L S L N K E M G S L S I K D P K L Y K K T L K R T R K F V V D G V E V S I T T S K I I S E D E K K D E E M R F  
 L R R Q E L R E L R L L Q K E E H R N Q T Q L S N K H E L Q L E Q M H K R F E Q E I N A K K K F F D T E L E N L E R Q Q K Q Q V E K M E Q D  
 H A V R R R E E A R R I R L E Q D R D Y T R F Q E Q L K L M K K E V K N E V E K L P R Q Q R K E S M K Q K M E E H T Q K K Q L L D R D F V A  
 K Q K E D L E L A M K R L T T D N R R E I C D K E R E C L M K K Q E L L R D R E A A L W E M E E H Q L Q E R H Q L V K Q Q L K D Q Y F L Q R  
 H E L L R K H E K E R E Q M Q R Y N Q R M I E Q L K V R Q Q Q E K A R L P K I Q R S E G K T R M A M Y K K S L H I N G G G S A A E Q R E K I  
 K Q F S Q Q E E K R Q K S E R L Q Q Q K H E N Q M R D M L A Q C E S N M S E L Q Q L Q N E K C H L L V E H E T Q K L K A L D E S H N Q N L  
 K E W R D K L R P R K K A L E E D L N Q K K R E Q E M F F K L S E E A E C P N P S T P S K A A K F F P Y S S A D A S

**TRTRPLEQKLISEEDLAANDILDYKDDDDKV**

**Tag:** C-Myc/DDK  
**Predicted MW:** 112 kDa  
**Concentration:** >0.05 µg/µL as determined by microplate BCA method  
**Purity:** > 80% as determined by SDS-PAGE and Coomassie blue staining  
**Buffer:** 25 mM Tris-HCl, 100 mM glycine, pH 7.3, 10% glycerol  
**Preparation:** Recombinant protein was captured through anti-DDK affinity column followed by conventional chromatography steps.



[View online »](#)

**Note:** For testing in cell culture applications, please filter before use. Note that you may experience some loss of protein during the filtration process.

**Storage:** Store at -80°C.

**Stability:** Stable for 12 months from the date of receipt of the product under proper storage and handling conditions. Avoid repeated freeze-thaw cycles.

**RefSeq:** [NP\\_005981](#)

**Locus ID:** 6793

**UniProt ID:** [Q94804](#)

**RefSeq Size:** 6039

**Cytogenetics:** 5q35.1

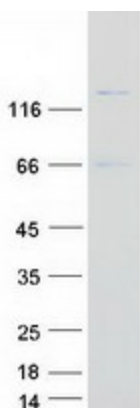
**RefSeq ORF:** 2904

**Synonyms:** LOK; PRO2729

**Summary:** This gene encodes a member of the Ste20 family of serine/threonine protein kinases, and is similar to several known polo-like kinase kinases. The protein can associate with and phosphorylate polo-like kinase 1, and overexpression of a kinase-dead version of the protein interferes with normal cell cycle progression. The kinase can also negatively regulate interleukin 2 expression in T-cells via the mitogen activated protein kinase kinase 1 pathway. [provided by RefSeq, Jul 2008]

**Protein Families:** Druggable Genome, Protein Kinase

### Product images:



Coomassie blue staining of purified STK10 protein (Cat# [TP309827]). The protein was produced from HEK293T cells transfected with STK10 cDNA clone (Cat# [RC209827]) using MegaTran 2.0 (Cat# [TT210002]).