

## Product datasheet for TP309822L

### CD62P (SELP) (NM\_003005) Human Recombinant Protein

#### Product data:

Product Type:	Recombinant Proteins
Description:	Recombinant protein of human selectin P (granule membrane protein 140kDa, antigen CD62) (SELP), 1 mg
Species:	Human
Expression Host:	HEK293T
Expression cDNA Clone or AA Sequence:	>RC209822 protein sequence <b>Red</b> =Cloning site <b>Green</b> =Tags(s)

MANCQIAILYQRFQRVVFSGISQLLCFSALISELTNQKEVAAWTYHYSTKAYSWNISRKYCQNRYTDLVAI  
QNKNEIDYLNKVLPPYSSYYWIGIRKNNKTWTWVGTKKALTNEAENWADNEPNNKRNNEDCVEIYKSPS  
APGKWNDHEHCLKKHALCYTASCQDMSCSKQGELETIGNYTCSYPGFYGPECEYVRECGELELPQHVL  
MNCSHPLGNFSFNSQCSFHCTDGYQVNGPSKLECLASGIWTKPPQCLAAQCPPLKIPERGNMTCLHSAK  
AFQHQSSCSFSCEEGFALVGPEVQCTASGVWTAPAPVCKAVQCQHLEAPSEGTMDCVHPLTAFAYGSSC  
KFECQPGYRVRGLDMLRCIDSGHWSAPLPTCEAISCEPLESPVHGSMDCSPSLRAFQYDTNCSFRCAEGF  
MLRGADIVRCDNLGQWTAPAPVCQALQCQDLPVPNEARVNCSHPFGAFRYQSVCSFTCNEGLLLVGASVL  
QCLATGNWNSVPPECQAIPCTPLLSPQNGTMTCVRPLGSSSYKSTCQFCIDEGYLSGPERLDCTRSGRW  
TDSPPMCEAIKCELPFAPEQGSGLDCSDTRGEFNVGSTCHFSCNNGFKLEGPNNECTTSGRWSATPPTCK  
GIASLPTPGVQCPALTTPGQGTMYCRHHPGTFGFNTTCYFGCNAGFTLIGDSTLSCRPSGQWTAFTPACR  
AVKCELVHNKPIAMNCSNLWGNFSYGSICSFHCLEGLLNGSAQTACQENGHWSTTVPTCQGPLTIQEA  
LTYFGGAVASTIGLIMGGTLLALLRKRFRQKDDGKCPLNPHSHLGTYGVFTNAAFDPSP

**TRTRPLEQKLISEEDLAANDILDYKDDDDKV**

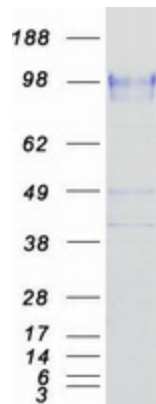
Tag:	C-Myc/DDK
Predicted MW:	86.2 kDa
Concentration:	>0.05 µg/µL as determined by microplate BCA method
Purity:	> 80% as determined by SDS-PAGE and Coomassie blue staining
Buffer:	25 mM Tris-HCl, 100 mM glycine, pH 7.3, 10% glycerol
Preparation:	Recombinant protein was captured through anti-DDK affinity column followed by conventional chromatography steps.



[View online »](#)

<b>Note:</b>	For testing in cell culture applications, please filter before use. Note that you may experience some loss of protein during the filtration process.
<b>Storage:</b>	Store at -80°C.
<b>Stability:</b>	Stable for 12 months from the date of receipt of the product under proper storage and handling conditions. Avoid repeated freeze-thaw cycles.
<b>RefSeq:</b>	<a href="#">NP_002996</a>
<b>Locus ID:</b>	6403
<b>UniProt ID:</b>	<a href="#">P16109</a> , <a href="#">A0A024R8Y9</a> , <a href="#">Q6NUL9</a>
<b>RefSeq Size:</b>	3185
<b>Cytogenetics:</b>	1q24.2
<b>RefSeq ORF:</b>	2487
<b>Synonyms:</b>	CD62; CD62P; GMP140; GRMP; LECAM3; PADGEM; PSEL
<b>Summary:</b>	This gene encodes a 140 kDa protein that is stored in the alpha-granules of platelets and Weibel-Palade bodies of endothelial cells. This protein redistributes to the plasma membrane during platelet activation and degranulation and mediates the interaction of activated endothelial cells or platelets with leukocytes. The membrane protein is a calcium-dependent receptor that binds to sialylated forms of Lewis blood group carbohydrate antigens on neutrophils and monocytes. Alternative splice variants may occur but are not well documented. [provided by RefSeq, Jul 2008]
<b>Protein Families:</b>	Druggable Genome, ES Cell Differentiation/IPS, Transmembrane
<b>Protein Pathways:</b>	Cell adhesion molecules (CAMs)

### Product images:



Coomassie blue staining of purified SELP protein (Cat# [TP309822]). The protein was produced from HEK293T cells transfected with SELP cDNA clone (Cat# [RC209822]) using MegaTran 2.0 (Cat# [TT210002]).