

## Product datasheet for **TP309816L**

### DNA Polymerase lambda (POLL) (NM\_013274) Human Recombinant Protein

#### Product data:

Product Type:	Recombinant Proteins
Description:	Recombinant protein of human polymerase (DNA directed), lambda (POLL), 1 mg
Species:	Human
Expression Host:	HEK293T
Expression cDNA Clone or AA Sequence:	>RC209816 protein sequence <b>Red</b> =Cloning site <b>Green</b> =Tags(s)

MDPRGILKAFPKRQKIHADASSKVLAKIPRREEGEEAEWLSSLRAHVVRTGIGRARAELFEKQIVQHGG  
QLCPAQGPVTHIVDEGM DYERALLRLPQLPPGAQLVKS AWLSLCLQERRLVDVAGFSIFIPSRYL  
HPQPSKAEQDASIPPGTHEALLQTALSPPPPTRPVSPQKAKEAPNTQAQPISDDEASDGEETQVSAAD  
LEALISGHYPTSLEGDCEPSPAPAVLDKWVCAQPSSQKATNHNHLHITEKLEVLAKAYSVQGDKWRALGYA  
KAINALKSFHKPVTSYQGAC SIPGIGKRMAEKIIELESGLRKL DHISESVPVLELFSNIWAGATKTAQ  
MWYQQGFRSLEDIRSQASLTTQQAIGLKHYSDFLERMPREEATEIEQTVQKAAQAFNSGLLCVACGSYRR  
GKATCGDVDVLITHPDGRSHRGIFSRLLDSL RQEGFLTDDLVSQEENGQQQKYLGVCRPLPGPGRRRRLD  
IIVPYSEFACALLYFTGSAHFNRSMRALAKTKGMSLSEHALSTAVVRNTHGCKVGPGRVLPPTPEKDFV  
RLLGLPYREPAERDW

**TRTRPLEQKLISEEDLAANDILDYKDDDDKV**

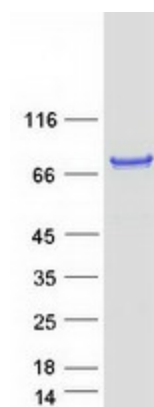
Tag:	C-Myc/DDK
Predicted MW:	63.3 kDa
Concentration:	>0.05 µg/µL as determined by microplate BCA method
Purity:	> 80% as determined by SDS-PAGE and Coomassie blue staining
Buffer:	25 mM Tris-HCl, 100 mM glycine, pH 7.3, 10% glycerol
Preparation:	Recombinant protein was captured through anti-DDK affinity column followed by conventional chromatography steps.
Note:	For testing in cell culture applications, please filter before use. Note that you may experience some loss of protein during the filtration process.
Storage:	Store at -80°C.



[View online »](#)

<b>Stability:</b>	Stable for 12 months from the date of receipt of the product under proper storage and handling conditions. Avoid repeated freeze-thaw cycles.
<b>RefSeq:</b>	<a href="#">NP_037406</a>
<b>Locus ID:</b>	27343
<b>UniProt ID:</b>	<a href="#">Q9UGP5</a>
<b>RefSeq Size:</b>	2741
<b>Cytogenetics:</b>	10q24.32
<b>RefSeq ORF:</b>	1725
<b>Synonyms:</b>	BETAN; POLKAPPA
<b>Summary:</b>	This gene encodes a DNA polymerase. DNA polymerases catalyze DNA-template-directed extension of the 3'-end of a DNA strand. This particular polymerase, which is a member of the X family of DNA polymerases, likely plays a role in non-homologous end joining and other DNA repair processes. Alternatively spliced transcript variants have been described. [provided by RefSeq, Mar 2010]
<b>Protein Families:</b>	Druggable Genome
<b>Protein Pathways:</b>	Base excision repair, Non-homologous end-joining

### Product images:



Coomassie blue staining of purified POLL protein (Cat# [TP309816]). The protein was produced from HEK293T cells transfected with POLL cDNA clone (Cat# [RC209816]) using MegaTran 2.0 (Cat# [TT210002]).