

Product datasheet for **TP309795L**

67kDa Laminin Receptor (RPSA) (NM_002295) Human Recombinant Protein

Product data:

Product Type:	Recombinant Proteins
Description:	Purified recombinant protein of Homo sapiens ribosomal protein SA (RPSA), transcript variant 1, 1 mg
Species:	Human
Expression Host:	HEK293T
Expression cDNA Clone or AA Sequence:	>RC209795 protein sequence Red =Cloning site Green =Tags(s)

MSGALDVLQMKEEDVLKFLAAGTHLGGTNLDFQMEQYIYKRKSDGIYIINLKRTWEKLLLAARAIVAIEN
PADVSVISSRNTGQRAVLKFAAATGATPIAGRFTPGTFTNQIAAFREPRLLVTDPRADHQPLTEASYV
NLPTIALCNTDSPLRYVDIAIPCNNKGAHSVGLMWWMLAREVLRMRGTISREHPWEVMPDLYFYRDPEEI
EKEGQAAA EKAVTKKEEFQGEWTAPAPEFTATQPEVADWSEGVQVPSVPIQQFPTEDWSAQPATEDWSAAP
TAQATEWVGATTDWS

TRTRPLEQKLISEEDLAANDILDYKDDDDKV

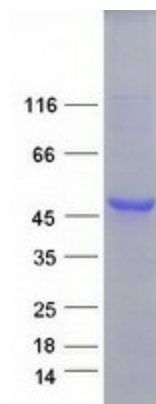
Tag:	C-Myc/DDK
Predicted MW:	32.7 kDa
Concentration:	>0.05 µg/µL as determined by microplate BCA method
Purity:	> 80% as determined by SDS-PAGE and Coomassie blue staining
Buffer:	25 mM Tris-HCl, 100 mM glycine, pH 7.3, 10% glycerol
Preparation:	Recombinant protein was captured through anti-DDK affinity column followed by conventional chromatography steps.
Note:	For testing in cell culture applications, please filter before use. Note that you may experience some loss of protein during the filtration process.
Storage:	Store at -80°C.
Stability:	Stable for 12 months from the date of receipt of the product under proper storage and handling conditions. Avoid repeated freeze-thaw cycles.
RefSeq:	NP_002286
Locus ID:	3921



[View online »](#)

UniProt ID:	P08865 , A0A024R2L6
RefSeq Size:	1155
Cytogenetics:	3p22.1
RefSeq ORF:	885
Synonyms:	37LRP; 67LR; ICAS; LAMBR; lamR; LAMR1; LBP; LBP/p40; LRP; LRP/LR; NEM/1CHD4; p40; SA
Summary:	<p>Laminins, a family of extracellular matrix glycoproteins, are the major noncollagenous constituent of basement membranes. They have been implicated in a wide variety of biological processes including cell adhesion, differentiation, migration, signaling, neurite outgrowth and metastasis. Many of the effects of laminin are mediated through interactions with cell surface receptors. These receptors include members of the integrin family, as well as non-integrin laminin-binding proteins. This gene encodes a high-affinity, non-integrin family, laminin receptor 1. This receptor has been variously called 67 kD laminin receptor, 37 kD laminin receptor precursor (37LRP) and p40 ribosome-associated protein. The amino acid sequence of laminin receptor 1 is highly conserved through evolution, suggesting a key biological function. It has been observed that the level of the laminin receptor transcript is higher in colon carcinoma tissue and lung cancer cell line than their normal counterparts. Also, there is a correlation between the upregulation of this polypeptide in cancer cells and their invasive and metastatic phenotype. Multiple copies of this gene exist, however, most of them are pseudogenes thought to have arisen from retropositional events. Two alternatively spliced transcript variants encoding the same protein have been found for this gene. [provided by RefSeq, Jul 2008]</p>
Protein Families:	Druggable Genome
Protein Pathways:	Ribosome

Product images:



Coomassie blue staining of purified RPSA protein (Cat# [TP309795]). The protein was produced from HEK293T cells transfected with RPSA cDNA clone (Cat# [RC209795]) using MegaTran 2.0 (Cat# [TT210002]).