

## Product datasheet for **TP309793**

### IRGC (NM\_019612) Human Recombinant Protein

#### Product data:

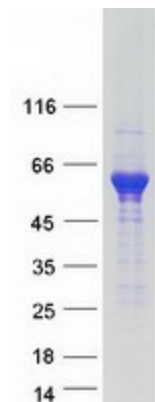
Product Type:	Recombinant Proteins
Description:	Recombinant protein of human immunity-related GTPase family, cinema (IRGC), 20 µg
Species:	Human
Expression Host:	HEK293T
Expression cDNA Clone or AA Sequence:	>RC209793 protein sequence <b>Red</b> =Cloning site <b>Green</b> =Tags(s)
	<p>MATSKLPVVPGEENTILMAKERLEALRTAFESGDLPGAASHLQELLASTESIRLEVGVGTGESGAGKSSL INALRGLEAEDPGAALTGVMETTMQSPYPHPQFPDVTLWDLPGAGSPGCPADKYLKQVDFSRDYDFLLV SPRRCGAVETRLAAEILCQGKKFYFVRTKVEDLAATRTQRPSGFREAAVLQEIRDHCAERLREAGVADP RIFLVSNLSPARYDFPTLVSTWEHDLP SHRRHAGLLSLPDISLEALQKKKAMLQEQLKTALVLGVIQAL PVPGLAAAYDDALLIHSRLRGYHRSFGLDDDSLAKLAEQVGKQAGDLRSVIRSPLANEVSPETVLRLYSQS SDGAMRVARAFERGIPVFGTLVAGGISFGAVYTMLQGCLNEMAEDAQRVRIKALEDDEPQPEVSLEVASD NGVEKGGSGEGGGEEAPLSTCRKLG LLLKYILDSWKKHDSSEEK</p> <p><b>TRTRPLEQKLISEEDLAANDILDYKDDDDKV</b></p>
Tag:	C-Myc/DDK
Predicted MW:	50.1 kDa
Concentration:	>0.05 µg/µL as determined by microplate BCA method
Purity:	> 80% as determined by SDS-PAGE and Coomassie blue staining
Buffer:	25 mM Tris-HCl, 100 mM glycine, pH 7.3, 10% glycerol
Preparation:	Recombinant protein was captured through anti-DDK affinity column followed by conventional chromatography steps.
Note:	For testing in cell culture applications, please filter before use. Note that you may experience some loss of protein during the filtration process.
Storage:	Store at -80°C.
Stability:	Stable for 12 months from the date of receipt of the product under proper storage and handling conditions. Avoid repeated freeze-thaw cycles.
RefSeq:	<u>NP_062558</u>



[View online »](#)

Locus ID:	56269
UniProt ID:	<u>Q6NXR0</u>
RefSeq Size:	1619
Cytogenetics:	19q13.31
RefSeq ORF:	1389
Synonyms:	CINEMA; IFGGE; ligp5; IRGC1; R30953_1

### Product images:



Coomassie blue staining of purified IRGC protein (Cat# TP309793). The protein was produced from HEK293T cells transfected with IRGC cDNA clone (Cat# [RC209793]) using MegaTran 2.0 (Cat# [TT210002]).