

## Product datasheet for **TP309790M**

### **TMEM35 (TMEM35A) (NM\_021637) Human Recombinant Protein**

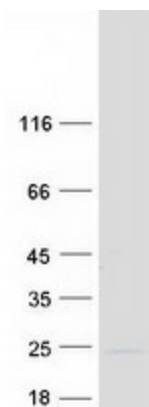
#### Product data:

Product Type:	Recombinant Proteins
Description:	Recombinant protein of human transmembrane protein 35 (TMEM35), 100 µg
Species:	Human
Expression Host:	HEK293T
Expression cDNA Clone or AA Sequence:	>RC209790 protein sequence <b>Red</b> =Cloning site <b>Green</b> =Tags(s)
	 MASPRTVTIVALSVLGLFFVFMGTIKLTPRLSKDAYSEMKRAYKSYVRALPLLKMGINSILLRKSIGA LEVACGIVMTLVPGRPKDVANFFLLLLVLAVLFFHQLVGDPLKRYAHALVFGILLTCRLLIARKPEDRSS EKKPLPGNAEEQPSLYEKAPQGKVKVS  <b>TRTRPLEQKLISEEDLAANDILDYKDDDDKV</b>
Tag:	C-Myc/DDK
Predicted MW:	18.3 kDa
Concentration:	>0.05 µg/µL as determined by microplate BCA method
Purity:	> 80% as determined by SDS-PAGE and Coomassie blue staining
Buffer:	25 mM Tris-HCl, 100 mM glycine, pH 7.3, 10% glycerol
Preparation:	Recombinant protein was captured through anti-DDK affinity column followed by conventional chromatography steps.
Note:	For testing in cell culture applications, please filter before use. Note that you may experience some loss of protein during the filtration process.
Storage:	Store at -80°C.
Stability:	Stable for 12 months from the date of receipt of the product under proper storage and handling conditions. Avoid repeated freeze-thaw cycles.
RefSeq:	<a href="#">NP_067650</a>
Locus ID:	59353
UniProt ID:	<a href="#">Q53FP2</a>
RefSeq Size:	2086



[View online »](#)

Cytogenetics:	Xq22.1
RefSeq ORF:	501
Synonyms:	NACHO; TMEM35; TUF-1
Summary:	A soluble peptide released by shedding may interact with NGFR and modulate neurite outgrowth.[UniProtKB/Swiss-Prot Function]
Protein Families:	Transmembrane

**Product images:**

Coomassie blue staining of purified TMEM35A protein (Cat# [TP309790]). The protein was produced from HEK293T cells transfected with TMEM35A cDNA clone (Cat# [RC209790]) using MegaTran 2.0 (Cat# [TT210002]).