

Product datasheet for **TP309790L**

TMEM35 (TMEM35A) (NM_021637) Human Recombinant Protein

Product data:

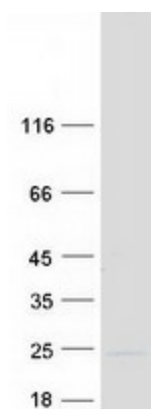
Product Type:	Recombinant Proteins
Description:	Recombinant protein of human transmembrane protein 35 (TMEM35), 1 mg
Species:	Human
Expression Host:	HEK293T
Expression cDNA Clone or AA Sequence:	>RC209790 protein sequence Red =Cloning site Green =Tags(s)
	 MASPRTVTIVALSVLGLFFVFMGTIKLTPRLSKDAYSEMGRAYKSYVRALPLLKMGINSILLRKSIGA LEVACGIVMTLVPGRPKDVANFFLLLLVLAVLFFHQLVGDPLKRYAHALVFGILLTCRLLIARKPEDRSS EKKPLPGNAEEQPSLYEKAPQGKVKVS TRTRPLEQKLISEEDLAANDILDYKDDDDKV
Tag:	C-Myc/DDK
Predicted MW:	18.3 kDa
Concentration:	>0.05 µg/µL as determined by microplate BCA method
Purity:	> 80% as determined by SDS-PAGE and Coomassie blue staining
Buffer:	25 mM Tris-HCl, 100 mM glycine, pH 7.3, 10% glycerol
Preparation:	Recombinant protein was captured through anti-DDK affinity column followed by conventional chromatography steps.
Note:	For testing in cell culture applications, please filter before use. Note that you may experience some loss of protein during the filtration process.
Storage:	Store at -80°C.
Stability:	Stable for 12 months from the date of receipt of the product under proper storage and handling conditions. Avoid repeated freeze-thaw cycles.
RefSeq:	NP_067650
Locus ID:	59353
UniProt ID:	Q53FP2
RefSeq Size:	2086



[View online »](#)

Cytogenetics:	Xq22.1
RefSeq ORF:	501
Synonyms:	NACHO; TMEM35; TUF-1
Summary:	A soluble peptide released by shedding may interact with NGFR and modulate neurite outgrowth.[UniProtKB/Swiss-Prot Function]
Protein Families:	Transmembrane

Product images:



Coomassie blue staining of purified TMEM35A protein (Cat# [TP309790]). The protein was produced from HEK293T cells transfected with TMEM35A cDNA clone (Cat# [RC209790]) using MegaTran 2.0 (Cat# [TT210002]).