

Product datasheet for TP309779

LSG1 (NM_018385) Human Recombinant Protein

Product data:

Product Type:	Recombinant Proteins
Description:	Recombinant protein of human large subunit GTPase 1 homolog (<i>S. cerevisiae</i>) (LSG1), 20 µg
Species:	Human
Expression Host:	HEK293T
Expression cDNA Clone or AA Sequence:	>RC209779 protein sequence Red=Cloning site Green=Tags(s)

MGRRRAPAGGSLGRALMRHQTQRSRSHRHTDSDLHTSELNDGYDWGRLNLQSVTEQSSLDLFLATAELAG
TEFVAEKLNIKFPVPAEARTGLLSFEESQRIKKLHEENKQFLCIPRRPNWNQNTTPEELKQAEKDNFLEWR
RQLVRLEEEQKLILTPFERNLDFWRQLWRVIERSDIVVQIVDARNPLLFRCEDLECYVKEMDANKENVIL
INKADLLTAEQSAWAMYFEKEDVKVIFWSALAGAIPLNGDSEEEANRDDRQSNTTEFGHSSFDQAEISH
SESEHLPARDSPSLSENPTTDEDDSEYEDCPEEEEDDWQTCSEEDGPKEEDCSQDWKESSTADSEARSRK
TPQKRQIHNFSLVSKQELLELFKELHTGRKVKDGQLTVGLVGYPNVVKSSSTINTIMGNKKVSVSATPGH
TKHFQTLVVEPGLCLCDPCPLVMPFSVSTKAEMTCGILPIDQMRDHVPPVSLVCQNIPIRHVLEATYGIN
IITPREDEDPHRPPTSEELLTAYGYMRGFMTHAQPDQPRSARYILKDYVSGKLLYCHPPPGRDPVTFQH
QHQRLENKMNSDEIKMQLGRNKKAKQIENIVDKTFFHQENVRALTKGVQAVMGYKPGSGVWTASTASSE
NGAGKPWKKHGNRNKKEKSRRLYKHLDM

TRTRPLEQKLISEEDLAANDILDYKDDDDKV

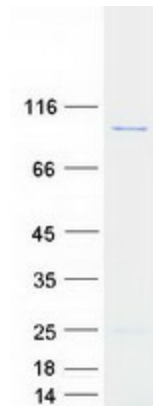
Tag:	C-Myc/DDK
Predicted MW:	75 kDa
Concentration:	>0.05 µg/µL as determined by microplate BCA method
Purity:	> 80% as determined by SDS-PAGE and Coomassie blue staining
Buffer:	25 mM Tris-HCl, 100 mM glycine, pH 7.3, 10% glycerol
Preparation:	Recombinant protein was captured through anti-DDK affinity column followed by conventional chromatography steps.
Note:	For testing in cell culture applications, please filter before use. Note that you may experience some loss of protein during the filtration process.
Storage:	Store at -80°C.



[View online »](#)

Stability:	Stable for 12 months from the date of receipt of the product under proper storage and handling conditions. Avoid repeated freeze-thaw cycles.
RefSeq:	NP_060855
Locus ID:	55341
UniProt ID:	Q9H089
RefSeq Size:	3589
Cytogenetics:	3q29
RefSeq ORF:	1974
Summary:	This gene encodes a protein related to the yeast large subunit GTPase 1. The encoded protein is necessary for cell viability and may localize in the endoplasmic reticulum, nucleus and cytoplasm. [provided by RefSeq, Feb 2009]

Product images:



Coomassie blue staining of purified LSG1 protein (Cat# TP309779). The protein was produced from HEK293T cells transfected with LSG1 cDNA clone (Cat# [RC209779]) using MegaTran 2.0 (Cat# [TT210002]).