

## Product datasheet for **TP309768M**

### EEF1B2 (NM\_001037663) Human Recombinant Protein

#### Product data:

Product Type:	Recombinant Proteins
Description:	Recombinant protein of human eukaryotic translation elongation factor 1 beta 2 (EEF1B2), transcript variant 3, 100 µg
Species:	Human
Expression Host:	HEK293T
Expression cDNA Clone or AA Sequence:	>RC209768 protein sequence <b>Red</b> =Cloning site <b>Green</b> =Tags(s)

MGFGDLKSPAGLQVLNDYLADKSYIEGYVPSQADVAVFEAVSSPPPADLCHALRWYNHIKSYEKEKASLP  
GVKKALGKYGPADVEDTTGSGATDSKDDDDIDLFGSDDEESEEAKRLREERLAQYESKKAKKPALVAKS  
SILLDVKPWDEETDMAKLEECVRSIQADGLVWGSSKLVPGYGIKKLQIQCVWEDDKVGTDMLEEQTAF  
EDYVQSM DVAAFNKI

**TRTRPLEQKLISEEDLAANDILDYKDDDDKV**

Tag:	C-Myc/DDK
Predicted MW:	24.6 kDa
Concentration:	>0.05 µg/µL as determined by microplate BCA method
Purity:	> 80% as determined by SDS-PAGE and Coomassie blue staining
Buffer:	25 mM Tris-HCl, 100 mM glycine, pH 7.3, 10% glycerol
Preparation:	Recombinant protein was captured through anti-DDK affinity column followed by conventional chromatography steps.
Note:	For testing in cell culture applications, please filter before use. Note that you may experience some loss of protein during the filtration process.
Storage:	Store at -80°C.
Stability:	Stable for 12 months from the date of receipt of the product under proper storage and handling conditions. Avoid repeated freeze-thaw cycles.
RefSeq:	<a href="#">NP_001032752</a>
Locus ID:	1933



[View online »](#)

UniProt ID: [P24534](#), [A0A024R3W7](#)

RefSeq Size: 900

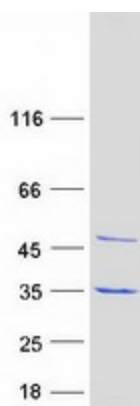
Cytogenetics: 2q33.3

RefSeq ORF: 675

Synonyms: EEF1B; EEF1B1; EF1B

**Summary:** This gene encodes a translation elongation factor. The protein is a guanine nucleotide exchange factor involved in the transfer of aminoacylated tRNAs to the ribosome. Alternative splicing results in three transcript variants which differ only in the 5' UTR. [provided by RefSeq, Jul 2008]

### Product images:



Coomassie blue staining of purified EEF1B2 protein (Cat# [TP309768]). The protein was produced from HEK293T cells transfected with EEF1B2 cDNA clone (Cat# [RC209768]) using MegaTran 2.0 (Cat# [TT210002]).