

Product datasheet for **TP309767L**

PAPP A (PAPPA) (NM_002581) Human Recombinant Protein

Product data:

Product Type:	Recombinant Proteins
Description:	Purified recombinant protein of Homo sapiens pregnancy-associated plasma protein A, pappalysin 1 (PAPPA), 1 mg
Species:	Human
Expression Host:	HEK293T



[View online »](#)

Expression cDNA Clone or AA Sequence: >RC209767 representing NM_002581
Red=Cloning site **Green**=Tags(s)

MRLWSWVLHLGLLSAALGCGLAERPRRARRDPRAGRPPRPAAGPATCATRAARGRRASPPPPPPGGAW
 AVRVRPRRQREARGATEEPSPPSRALYFSGRGEQLRLRADLELPRDAFTLQVWLRAEGGQRSPAVITGL
 YDKCSYISDRGWVVGIHTISDQDNKDPYFFSLKTDRARQVTTINAHRSYLPGQWVYLAATYDQGMKL
 YVNGAQVATSGEQVGGIFSPLTQKCKVLMGGSALNHNYRGYIEHFSWLVKQVARTQREILSDMETHGAHTA
 LPQLLQENWDNVKHAWSMKDGGSSPKVEFSNAHGFLDTSLEPPLCGQTLCDNTEVIASYNQLSSFRQP
 KVVYRVVNLIEDDHKNPTVTREQVDFQHHQLAEAFKQYNISWELDVLEVSNSLRRRLLILANCDISKIG
 DENCDCPECNHTLTGHDGGDCRHLRHPAFVKKQHNGVCDMDCNYERFNFDGGECCDPEITNVTQTCFDPDS
 PHRAYLDVNELKNILKLDGSTHLNIFFAKSSEELAGVATWPWDKEALMHLGGIVLNPSFYGMPGHTHTM
 IHEIGHSLGLYHVFGRGISEIQSCSDPCMETEPSFETGDLCDNTNPAPKHKSCGDPGPGNDTCGFHSFFNT
 PYNMFMSYADDCTDSFTPNQVARMHCYLDLVYQGWQPSRKPAPVALAPQVLGHTTDSVTLEWFPPIDGH
 FFERELGSACHLCLEGRILVQYASNASSPMPSPSGHWSPREAEGHPDVEQPCKSSVRTWSPNSAVNPHT
 VPPACPEPQGCYLELEFLYPLVPESLTIWVTFVSTDWSSGAVNDIKLLAVSGKNISLGPQNVFCDVPLT
 IRLWDVGEVYGIQIYTLDEHLEIDAAMLTSTADTPLCLQCKPLKYKVRDPPLOQMDVASILHLNRKFVD
 MDLNLGSVYQYWVITISGTEESESPAVTYIHGSGYCGDGIIQKDQGEQCDDMNKINGDGCSLFCRQEV
 FNCIDEPSRCYFHDGDGVCEEFQKTSIKDCGVYTPQGFLDQWASNASVSHQDQCPGWVIGQPAASQV
 CRTKVIDLSEGISQHAWYPTISYPYSQLAQTTFWLRAYFSQPMVAAAIVHLVTDGTYGDKQKQETISV
 QLLDQKQSHDLGLHVLSCRNNPLIIPVVDLSQPFYHSQAVRVSFSSPLVAISGVALRSFDNFDPVTL
 SCQRGETYSPAQSCVHFACEKTDCELAVENASLNCSSDRYHGAQCTVSCRTGYVLQIRRDDELISQ
 TGPSVTCTCTEGKWNKQVACEPVDCSIPIHHQVYAASFSCPEGTTFGSQCSFQCRHPAQLKGNNSLLTCM
 EDGLWSFPEALCELMCLAPPPVFNADLQTARCRENKHKVGFSFKYKCKPGYHVPGSSSRKSKKRAFKTQCT
 QDGSWQEGACVPVTCDDPPPKFHGLYQCTNGFQFNSECRKCEDSDASQGLGSNVHCRKDGTVNGSFFH
 CQEMQGGQCSVPNELNSNLKQCPDGYAIGSECATSCLDHNSEIILPMNVTVRDIHVLNPNTRVERVCT
 AGLKWYPHPALIHCVKGCEPFMGDNYCDAINNRAFCNYDGGDCCTSTVKTKKVTFFPMSCDLQGDACR
 DQAEHRSRDLRGYSHG

SGPTRTRPLEQKLISEEDLAANDILDYKDDDDKV

Tag: C-Myc/DDK

Predicted MW: 178.6 kDa

Concentration: >0.05 µg/µL as determined by microplate BCA method

Purity: > 80% as determined by SDS-PAGE and Coomassie blue staining

Buffer: 25 mM Tris-HCl, 100 mM glycine, pH 7.3, 10% glycerol

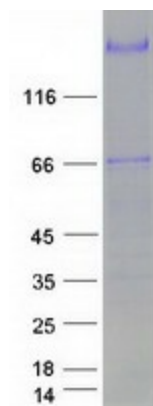
Preparation: Recombinant protein was captured through anti-DDK affinity column followed by conventional chromatography steps.

Note: For testing in cell culture applications, please filter before use. Note that you may experience some loss of protein during the filtration process.

Storage: Store at -80°C.

Stability:	Stable for 12 months from the date of receipt of the product under proper storage and handling conditions. Avoid repeated freeze-thaw cycles.
RefSeq:	NP_002572
Locus ID:	5069
UniProt ID:	Q13219 , Q7Z613 , B4DTA8
RefSeq Size:	11025
Cytogenetics:	9q33.1
RefSeq ORF:	4881
Synonyms:	ASBABP2; DIPLA1; IGFBP-4ase; PAPA; PAPP-A; PAPPA1
Summary:	This gene encodes a secreted metalloproteinase which cleaves insulin-like growth factor binding proteins (IGFBPs). Following IGFBP cleavage, insulin growth factors dissociate from IGFBPs and bind to IGF receptors, resulting in activation of the IGF pathway. The encoded protein plays a role in bone formation, inflammation, wound healing and female fertility. Enhanced expression of this protein is associated with diabetic nephropathy in human patients and this protein may promote tumor invasion and growth in various human cancers. [provided by RefSeq, Aug 2017]
Protein Families:	Druggable Genome, Protease, Secreted Protein

Product images:



Coomassie blue staining of purified PAPP A protein (Cat# [TP309767]). The protein was produced from HEK293T cells transfected with PAPP A cDNA clone (Cat# [RC209767]) using MegaTran 2.0 (Cat# [TT210002]).