

## Product datasheet for TP309766

### LRP15 (LRRC3B) (NM\_052953) Human Recombinant Protein

#### Product data:

Product Type:	Recombinant Proteins
Description:	Recombinant protein of human leucine rich repeat containing 3B (LRRC3B), 20 µg
Species:	Human
Expression Host:	HEK293T
Expression cDNA Clone or AA Sequence:	>RC209766 protein sequence <b>Red</b> =Cloning site <b>Green</b> =Tags(s)
	MNLVDLWLTRSLSMCLLLQSFVLMILCFHSASMCPKGCCLSSSGGLNVTCSNANLKEIPRDLPPETVLLY LDSNQITSIPNEIFKDLHQLRVLNLSKNGIEFIDEHAFKGV AETLQTLDSLNDRIQSVHKNAFNKARA RIANNPWHCDCCTLQQLRSMASNHETAHNVICKTSVLDEHAGRPFLNAANDADLCNLPKKTDDYAMLVTM FGWFTMVISYVWYVVRQNQEDARRHLEYLKSLPSRQKKADEPDDISTVW
	<b>TR</b> TRPLEQKLISEEDLAANDILDYKDDDDKV
Tag:	C-Myc/DDK
Predicted MW:	29.1 kDa
Concentration:	>0.05 µg/µL as determined by microplate BCA method
Purity:	> 80% as determined by SDS-PAGE and Coomassie blue staining
Buffer:	25 mM Tris-HCl, 100 mM glycine, pH 7.3, 10% glycerol
Preparation:	Recombinant protein was captured through anti-DDK affinity column followed by conventional chromatography steps.
Note:	For testing in cell culture applications, please filter before use. Note that you may experience some loss of protein during the filtration process.
Storage:	Store at -80°C.
Stability:	Stable for 12 months from the date of receipt of the product under proper storage and handling conditions. Avoid repeated freeze-thaw cycles.
RefSeq:	<a href="#">NP_443185</a>
Locus ID:	116135
UniProt ID:	<a href="#">Q96PB8</a> , <a href="#">A1LNH5</a>



[View online »](#)

RefSeq Size: 1718

Cytogenetics: 3p24.1

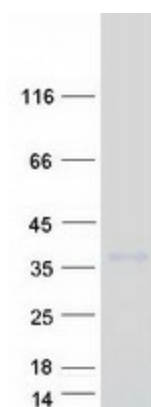
RefSeq ORF: 777

Synonyms: LRP15

**Summary:** The protein encoded by this gene is a tumor suppressor, with lowered expression levels found in gastric, renal, colorectal, lung, and breast cancer tissues. The promoter of this gene is frequently hypermethylated in these cancer tissues, although the hypermethylation does not appear to be the cause of the reduced expression of this gene. Several transcript variants encoding the same protein have been found for this gene. [provided by RefSeq, Dec 2015]

**Protein Families:** Transmembrane

### Product images:



Coomassie blue staining of purified LRR3B protein (Cat# TP309766). The protein was produced from HEK293T cells transfected with LRR3B cDNA clone (Cat# [RC209766]) using MegaTran 2.0 (Cat# [TT210002]).