

Product datasheet for **TP309761SE**

VCAM1 (NM_001078) Human Recombinant Protein

Product data:

Product Type:	Recombinant Proteins
Description:	Purified recombinant protein of Human vascular cell adhesion molecule 1 (VCAM1), transcript variant 1, secretory expressed in HEK293T cells, 20ug
Species:	Human
Expression Host:	HEK293T
Expression cDNA Clone or AA Sequence:	>RC209761 protein sequence Red =Cloning site Green =Tags(s)

MPGKMWVILGASNILWIMFAASQAFKIETTPESRYLAQIGDSVSLTCSTTGCEPFFSWRTQIDSPLNGK
VTNEGTTSTLTMNPVSFGNEHSYLCTATCESRKLEKGIQVEIYSFPKDPEIHLSGPLEAGKPITVKCSVA
DVYPFDRLEIDLLKGDHLMKSQEFLEDADRKSLETKSLEVTFTPIEDIGKVLVCRAKLHIDEMDSVPTV
RQAVKELQVYISPKNTVISVNPSTKLQEGGSVTMTCSSEGLPAPEIFWSKKLDNGNLQHLSGNATLTLIA
MRMEDSGIYVCEGVNLIGKNRKEVELIVQEPFTVEISPGPRIAAQIGDSVMLTCSVMGCESPSFSWRTQ
IDSPLSGKVRSEGTNSTLTLPVSFENEHSYLCTVTCGHHKLEKGIQVELYSFPRDPEIEMSGGLVNGSS
VTVSCVKPSVYPLDRLEIELLKGETILENIEFLEDTDMKSLENKSLEMTFIPTIEDTGKALVCQAKLHID
DMEFEPKQRQSTQTLVNVAPRDTTVLVSPSSILEEGSSVNMTCLSQGFPAPKILWSRQLPNGELQPLSE
NATLTLISTKMEDSGVYLCEGINQAGRSRKEVELIIQVTPKDIKLTAFPSSESVKEGDTVIIISCTCGNVPE
TWIILKKKAETGDTVLSIDGAYTIRKAQLKDAGVYECESKNKVGSQRLSLTLDVQGRENKNDYFPELL
VLYFASSLIIPAIGMIIYFARKANMKGSYSLVEAQKSKV

TRTRPLEQKLISEEDLAANDILDYKDDDDKV

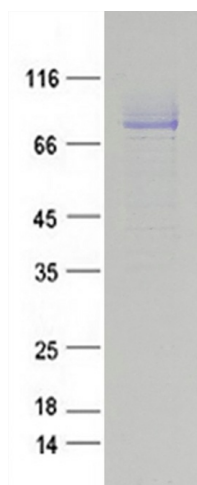
Tag:	C-Myc/DDK
Predicted MW:	82.3 kDa
Concentration:	>50 ug/mL as determined by microplate Bradford method
Purity:	> 80% as determined by SDS-PAGE and Coomassie blue staining
Buffer:	25mM Tris-HCl, pH7.3, 100mM glycine, 10% glycerol
Note:	For culture applications, please filter before use. Note that you may experience some loss of protein during the filtration process.
Storage:	Store at -80°C after receiving vials.



[View online »](#)

Stability:	Stable for at least 1 year from receipt of products under proper storage and handling conditions. Avoid repeated freeze-thaw cycles.
RefSeq:	NP_001069
Locus ID:	7412
UniProt ID:	P19320
RefSeq Size:	3220
Cytogenetics:	1p21.2
RefSeq ORF:	2217
Synonyms:	CD106; INCAM-100
Summary:	This gene is a member of the Ig superfamily and encodes a cell surface sialoglycoprotein expressed by cytokine-activated endothelium. This type I membrane protein mediates leukocyte-endothelial cell adhesion and signal transduction, and may play a role in the development of arteriosclerosis and rheumatoid arthritis. Three alternatively spliced transcripts encoding different isoforms have been described for this gene. [provided by RefSeq, Dec 2010]
Protein Families:	Druggable Genome, ES Cell Differentiation/IPS, Transmembrane
Protein Pathways:	Cell adhesion molecules (CAMs), Leukocyte transendothelial migration

Product images:



Coomassie blue staining of purified VCAM1 protein (Cat #TP309761SE). The protein was produced from mammalian cells transfected with VCAM1 cDNA clone (Cat #[RC209761]).