

Product datasheet for **TP309761M**

VCAM1 (NM_001078) Human Recombinant Protein

Product data:

Product Type:	Recombinant Proteins
Description:	Recombinant protein of human vascular cell adhesion molecule 1 (VCAM1), transcript variant 1, 100 µg
Species:	Human
Expression Host:	HEK293T
Expression cDNA Clone or AA Sequence:	>RC209761 protein sequence Red =Cloning site Green =Tags(s)

MPGKMWVILGASNILWIMFAASQAFKIETTPESRYLAQIGDSVSLTCSTTGCESPFFSWRTQIDSPLNGK
VTNEGTTSTLTMNPVSGNEHSYLCTATCESRKLEKGIQVEIYSFPKDPEIHLSGPLEAGKPITVKCSVA
DVYPFDRLEIDLLKGDHLMKSQEFLEDADRKSLETKSLEVTFTPVIDIGKVLVCRAKLHIDEMDSVPTV
RQAVKELQVYISPKNTVISVNPSTKLQEGGSVTMTCSEGLPAPEIFWSKKLDNGNLQHLSGNATLTLIA
MRMEDSGIYVCEGVNLIGKNRKEVELIVQEKPFVTEISPGPRIAAQIGDSVMLTCSVMGCESPFSWRTQ
IDSPLSGKVRSEGTNSTLTLSPVSEFENEHSYLCTVTCGHKKLEKGIQVELYSFPRDPEIEMSGGLVNGSS
VTVSCKVPSVYPLDRLEIELLKGETILENIEFLEDTDMKSLENKSLEMTFIPTIEDTGKALVCQAKLHID
DMEFEPKQRQSTQTLVYVNAVPRDITVLVSPSSILEEGSSVNMTCLSQGFPAKILWSRQLPNGELQPLSE
NATLTLISTKMEDSGVYLCEGINQAGRSRKEVELIIQVTPKDIKLTAFPSVKEGDTVIISCTCGNVPE
TWIILKKAETGDTVLKSIDGAYTIRKAQLKDAGVYECESKNKVGSQRLSLTLDVQGRENNKDYFPELL
VLYFASSLIIPAIGMIIFARKANMKGSYSLVEAQKSKV

TRTRPLEQKLISEEDLAANDILDYKDDDDKV

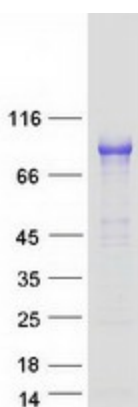
Tag:	C-Myc/DDK
Predicted MW:	78.7 kDa
Concentration:	>0.05 µg/µL as determined by microplate BCA method
Purity:	> 80% as determined by SDS-PAGE and Coomassie blue staining
Buffer:	25 mM Tris-HCl, 100 mM glycine, pH 7.3, 10% glycerol
Preparation:	Recombinant protein was captured through anti-DDK affinity column followed by conventional chromatography steps.
Note:	For testing in cell culture applications, please filter before use. Note that you may experience some loss of protein during the filtration process.



[View online »](#)

Storage:	Store at -80°C.
Stability:	Stable for 12 months from the date of receipt of the product under proper storage and handling conditions. Avoid repeated freeze-thaw cycles.
RefSeq:	NP_001069
Locus ID:	7412
UniProt ID:	P19320
RefSeq Size:	3220
Cytogenetics:	1p21.2
RefSeq ORF:	2217
Synonyms:	CD106; INCAM-100
Summary:	This gene is a member of the Ig superfamily and encodes a cell surface sialoglycoprotein expressed by cytokine-activated endothelium. This type I membrane protein mediates leukocyte-endothelial cell adhesion and signal transduction, and may play a role in the development of atherosclerosis and rheumatoid arthritis. Three alternatively spliced transcripts encoding different isoforms have been described for this gene. [provided by RefSeq, Dec 2010]
Protein Families:	Druggable Genome, ES Cell Differentiation/IPS, Transmembrane
Protein Pathways:	Cell adhesion molecules (CAMs), Leukocyte transendothelial migration

Product images:



Coomassie blue staining of purified VCAM1 protein (Cat# [TP309761]). The protein was produced from HEK293T cells transfected with VCAM1 cDNA clone (Cat# [RC209761]) using MegaTran 2.0 (Cat# [TT210002]).