

Product datasheet for **TP309761L**

VCAM1 (NM_001078) Human Recombinant Protein

Product data:

| | |
|---------------------------------------|--|
| Product Type: | Recombinant Proteins |
| Description: | Recombinant protein of human vascular cell adhesion molecule 1 (VCAM1), transcript variant 1, 1 mg |
| Species: | Human |
| Expression Host: | HEK293T |
| Expression cDNA Clone or AA Sequence: | >RC209761 protein sequence Red =Cloning site Green =Tags(s) |

MPGKMWVILGASNILWIMFAASQAFKIETTPESRYLAQIGDSVSLTCSTTGCEPFFSWRTQIDSPLNGK
VTNEGTTSTLTMNPVSGNEHSYLCTATCESRKLEKGIQVEIYSFPKDPEIHLSGPLEAGKPITVKCSVA
DVYPFDRLEIDLLKGDHLMKSQEFLEDADRKSLETKSLEVTFTPVEDIGKVLVCRAKLHIDEMDSVPTV
RQAVKELQVYISPKNTVISVNPSTKLQEGGSVTMTCSEGLPAPEIFWSKKLDNGNLQHLSGNATLTLIA
MRMEDSGIYVCEGVNLIGKNRKEVELIVQEKPFVTEISPGPRIAAQIGDSVMLTCSVMGCESPSFSWRTQ
IDSPLSGKVRSEGTNSTLTLSPVSEFENEHSYLCTVTCGHKKLEKGIQVELYSFPRDPEIEMSGGLVNGSS
VTVSCKVPSVYPLDRLEIELLKGETILENIEFLEDTDMKSLENKSLEMTFIPTIEDTGKALVCQAKLHID
DMEFEPKQRQSTQTLVYVNAVPRDITVLVSPSSILEEGSSVNMTCLSQGFPAKILWSRQLPNGELQPLSE
NATLTLISTKMEDSGVYLCEGINQAGRSRKEVELIIQVTPKDIKLTAFPSVKEGDTVIISCTCGNVPE
TWIILKKAETGDTVLSIDGAYTIRKAQLKDAGVYECESKNKVGSQRLSLTLDVQGRENNKDYFPELL
VLYFASSLIIPAIGMIIYFARKANMKGSYSLVEAQKSKV

TRTRPLEQKLISEEDLAANDILDYKDDDDKV

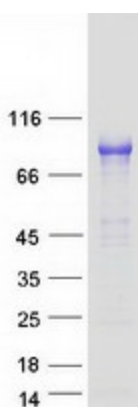
| | |
|----------------|--|
| Tag: | C-Myc/DDK |
| Predicted MW: | 78.7 kDa |
| Concentration: | >0.05 µg/µL as determined by microplate BCA method |
| Purity: | > 80% as determined by SDS-PAGE and Coomassie blue staining |
| Buffer: | 25 mM Tris-HCl, 100 mM glycine, pH 7.3, 10% glycerol |
| Preparation: | Recombinant protein was captured through anti-DDK affinity column followed by conventional chromatography steps. |
| Note: | For testing in cell culture applications, please filter before use. Note that you may experience some loss of protein during the filtration process. |



[View online »](#)

| | |
|--------------------------|--|
| Storage: | Store at -80°C. |
| Stability: | Stable for 12 months from the date of receipt of the product under proper storage and handling conditions. Avoid repeated freeze-thaw cycles. |
| RefSeq: | NP_001069 |
| Locus ID: | 7412 |
| UniProt ID: | P19320 |
| RefSeq Size: | 3220 |
| Cytogenetics: | 1p21.2 |
| RefSeq ORF: | 2217 |
| Synonyms: | CD106; INCAM-100 |
| Summary: | This gene is a member of the Ig superfamily and encodes a cell surface sialoglycoprotein expressed by cytokine-activated endothelium. This type I membrane protein mediates leukocyte-endothelial cell adhesion and signal transduction, and may play a role in the development of atherosclerosis and rheumatoid arthritis. Three alternatively spliced transcripts encoding different isoforms have been described for this gene. [provided by RefSeq, Dec 2010] |
| Protein Families: | Druggable Genome, ES Cell Differentiation/IPS, Transmembrane |
| Protein Pathways: | Cell adhesion molecules (CAMs), Leukocyte transendothelial migration |

Product images:



Coomassie blue staining of purified VCAM1 protein (Cat# [TP309761]). The protein was produced from HEK293T cells transfected with VCAM1 cDNA clone (Cat# [RC209761]) using MegaTran 2.0 (Cat# [TT210002]).