

## Product datasheet for TP309760M

### WEE1 (NM\_003390) Human Recombinant Protein

#### Product data:

**Product Type:** Recombinant Proteins  
**Description:** Recombinant protein of human WEE1 homolog (*S. pombe*) (WEE1), transcript variant 1, 100 µg  
**Species:** Human  
**Expression Host:** HEK293T  
**Expression cDNA Clone or AA Sequence:** >RC209760 representing NM\_003390  
**Red**=Cloning site **Green**=Tags(s)

MSFLSRQQPPPPRRAGAACTLRQKLIFSPCSDCEEEEEEEEEEGSGHSTGEDSAFQEPDSPLPPARSPTE  
PGPERRRSPGPAPGSPGELEEDLLLPGACPGADEAGGGAEGDSWEEEGFGSSSPVKSPAAPYFLGSSSFSP  
VRCGGPGDASPRGCGARRAGEGRRSPRPDHPGTPPHKTFRKLRLFDTPHTPKSLLSKARGIDSSSVKLRG  
SSLFMDTEKSGKREFDVRQTPQVNINPFTPDSLLLHSSGQCRRRKRTYWNSCGEDMEASDYELEDETRP  
AKRITITESNMKSRYTTEFHELEKIGSGEFGSVFKCVKRLDGCYAIKRSKKPLAGSVDEQNALREVIYAH  
AVLGQHSHVRYFSAWAEDDHMLIQNEYRNGGLADAISENYRIMSYPFKEAELKDLLLQVGRGLRYIHSM  
SLVHMDIKPSNIFISRTSIPNAASEEGDEDDWASNKVMFKIGDLGHVTRISSPQVEEGDSRFLANEVLQE  
NYTHLPKADIFALALTVCAAGAELPRNGDQWHEIRQGRIPRIPQVLSQEFTELLKVMIHDPERRPSA  
MALVKHSHVLLSASRKSAEQLRIELNAEKFNKNSLLQKELKKAQMAKAAAEEERALFTDRMATRSTTQSNRTS  
RLIGKKMNRSVSLTIY

**TRTRPLEQKLISEEDLAANDILDYKDDDDKV**

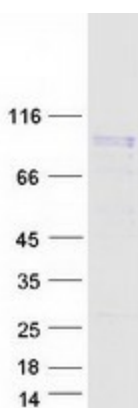
**Tag:** C-Myc/DDK  
**Predicted MW:** 71.4 kDa  
**Concentration:** >0.05 µg/µL as determined by microplate BCA method  
**Purity:** > 80% as determined by SDS-PAGE and Coomassie blue staining  
**Buffer:** 25 mM Tris-HCl, 100 mM glycine, pH 7.3, 10% glycerol  
**Preparation:** Recombinant protein was captured through anti-DDK affinity column followed by conventional chromatography steps.  
**Note:** For testing in cell culture applications, please filter before use. Note that you may experience some loss of protein during the filtration process.  
**Storage:** Store at -80°C.



[View online »](#)

<b>Stability:</b>	Stable for 12 months from the date of receipt of the product under proper storage and handling conditions. Avoid repeated freeze-thaw cycles.
<b>RefSeq:</b>	<a href="#">NP_003381</a>
<b>Locus ID:</b>	7465
<b>UniProt ID:</b>	<a href="#">P30291</a> , <a href="#">Q86V29</a>
<b>RefSeq Size:</b>	4232
<b>Cytogenetics:</b>	11p15.4
<b>RefSeq ORF:</b>	1938
<b>Synonyms:</b>	WEE1A; WEE1hu
<b>Summary:</b>	This gene encodes a nuclear protein, which is a tyrosine kinase belonging to the Ser/Thr family of protein kinases. This protein catalyzes the inhibitory tyrosine phosphorylation of CDC2/cyclin B kinase, and appears to coordinate the transition between DNA replication and mitosis by protecting the nucleus from cytoplasmically activated CDC2 kinase. [provided by RefSeq, Jul 2008]
<b>Protein Families:</b>	Druggable Genome, Protein Kinase, Stem cell - Pluripotency
<b>Protein Pathways:</b>	Cell cycle

### Product images:



Coomassie blue staining of purified WEE1 protein (Cat# [TP309760]). The protein was produced from HEK293T cells transfected with WEE1 cDNA clone (Cat# [RC209760]) using MegaTran 2.0 (Cat# [TT210002]).