

Product datasheet for TP309760L

WEE1 (NM_003390) Human Recombinant Protein

Product data:

Product Type:	Recombinant Proteins
Description:	Recombinant protein of human WEE1 homolog (<i>S. pombe</i>) (WEE1), transcript variant 1, 1 mg
Species:	Human
Expression Host:	HEK293T
Expression cDNA Clone or AA Sequence:	>RC209760 representing NM_003390 Red =Cloning site Green =Tags(s)

MSFLSRQQPPPPRRAGAACTLRQKLIFSPCSDCEEEEEEEEEEGSGHSTGEDSAFQEPDSPLPPARSPTE
PGPERRRSPGPAPGSPGEEEDLLLPGACPGADEAGGGAEGDSWEEEGFGSSSPVKSPAAPYFLGSSSFSP
VRCGGPGDASPRGCGARRAGEGRRSPRPDHPGTPPHKTFRKLRLFDTPHTPKSLLSKARGIDSSSVKLRG
SSLFMDTEKSGKREFDVRQTPQVNINPFTPDSLLLHSSGQCRRRKRTYWNDSGEDMEASDYELEDETRP
AKRITITESNMKSRYTTEFHELEKIGSGEFGSVFKCVKRLDGCYAIKRSKKPLAGSVDEQNALREVIYAH
AVLGQHSHVVRYFSAWAEDDHMLIQNEYRNGGLADAISENYRIMSYPKEAELKDLLLQVGRGLRYIHSM
SLVHMDIKPSNIFISRTSIPNAASEEGDEDDWASNKVMFKIGDLGHVTRISSPQVEEGDSRFLANEVLQE
NYTHLPKADIFALALTVCAAGAELPRNGDQWHEIRQGRLPRIPQVLSQEFTELLKVMIHDPERRPSA
MALVKHSVLLSASRKSAEQLRIELNAEKFNLSLLQKELKKAQMAKAAAEEERALFTDRMATRSTTQSNRTS
RLIGKKMNRVSLTIY

TRTRPLEQKLISEEDLAANDILDYKDDDDKV

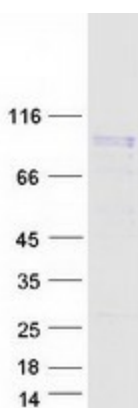
Tag:	C-Myc/DDK
Predicted MW:	71.4 kDa
Concentration:	>0.05 µg/µL as determined by microplate BCA method
Purity:	> 80% as determined by SDS-PAGE and Coomassie blue staining
Buffer:	25 mM Tris-HCl, 100 mM glycine, pH 7.3, 10% glycerol
Preparation:	Recombinant protein was captured through anti-DDK affinity column followed by conventional chromatography steps.
Note:	For testing in cell culture applications, please filter before use. Note that you may experience some loss of protein during the filtration process.
Storage:	Store at -80°C.



[View online »](#)

Stability:	Stable for 12 months from the date of receipt of the product under proper storage and handling conditions. Avoid repeated freeze-thaw cycles.
RefSeq:	NP_003381
Locus ID:	7465
UniProt ID:	P30291 , Q86V29
RefSeq Size:	4232
Cytogenetics:	11p15.4
RefSeq ORF:	1938
Synonyms:	WEE1A; WEE1hu
Summary:	This gene encodes a nuclear protein, which is a tyrosine kinase belonging to the Ser/Thr family of protein kinases. This protein catalyzes the inhibitory tyrosine phosphorylation of CDC2/cyclin B kinase, and appears to coordinate the transition between DNA replication and mitosis by protecting the nucleus from cytoplasmically activated CDC2 kinase. [provided by RefSeq, Jul 2008]
Protein Families:	Druggable Genome, Protein Kinase, Stem cell - Pluripotency
Protein Pathways:	Cell cycle

Product images:



Coomassie blue staining of purified WEE1 protein (Cat# [TP309760]). The protein was produced from HEK293T cells transfected with WEE1 cDNA clone (Cat# [RC209760]) using MegaTran 2.0 (Cat# [TT210002]).