

## Product datasheet for TP309756

### ATP5PF (NM\_001003696) Human Recombinant Protein

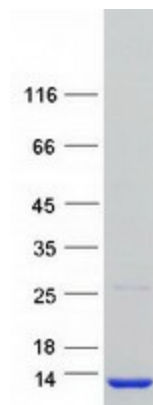
#### Product data:

Product Type:	Recombinant Proteins
Description:	Recombinant protein of human ATP synthase, H <sup>+</sup> transporting, mitochondrial F0 complex, subunit F6 (ATP5J), nuclear gene encoding mitochondrial protein, transcript variant 3, 20 µg
Species:	Human
Expression Host:	HEK293T
Expression cDNA Clone or AA Sequence:	>RC209756 protein sequence <span style="color: red;">Red</span> =Cloning site <span style="color: green;">Green</span> =Tags(s)  MILQRLFRFSSVIRSAVSVHLRRNIGVTAVAFNKELDPIQKLFVDKIREYKSKRQTSGGPVDASSEYQQE LERELFKLKQMFGNADMNTFHTFKFEDPKFEVIEKPQA  <span style="color: red;">TR</span> <span style="color: green;">TRPLEQKLISEEDLAANDILDYKDDDDKV</span>
Tag:	C-Myc/DDK
Predicted MW:	8.9 kDa
Concentration:	>0.05 µg/µL as determined by microplate BCA method
Purity:	> 80% as determined by SDS-PAGE and Coomassie blue staining
Buffer:	25 mM Tris-HCl, 100 mM glycine, pH 7.3, 10% glycerol
Preparation:	Recombinant protein was captured through anti-DDK affinity column followed by conventional chromatography steps.
Note:	For testing in cell culture applications, please filter before use. Note that you may experience some loss of protein during the filtration process.
Storage:	Store at -80°C.
Stability:	Stable for 12 months from the date of receipt of the product under proper storage and handling conditions. Avoid repeated freeze-thaw cycles.
RefSeq:	<u><a href="#">NP_001003696</a></u>
Locus ID:	522
UniProt ID:	<u><a href="#">P18859</a></u> , <u><a href="#">Q6IB54</a></u> , <u><a href="#">Q6NZ59</a></u>
RefSeq Size:	841


[View online »](#)

<b>Cytogenetics:</b>	21q21.3
<b>RefSeq ORF:</b>	324
<b>Synonyms:</b>	ATP5; ATP5A; ATP5J; ATPM; CF6; F6
<b>Summary:</b>	Mitochondrial ATP synthase catalyzes ATP synthesis, utilizing an electrochemical gradient of protons across the inner membrane during oxidative phosphorylation. It is composed of two linked multi-subunit complexes: the soluble catalytic core, F1, and the membrane-spanning component, Fo, which comprises the proton channel. The F1 complex consists of 5 different subunits (alpha, beta, gamma, delta, and epsilon) assembled in a ratio of 3 alpha, 3 beta, and a single representative of the other 3. The Fo complex has nine subunits (a, b, c, d, e, f, g, F6 and 8). This gene encodes the F6 subunit of the Fo complex. The F6 subunit is required for F1 and Fo interactions. Alternatively spliced transcript variants encoding different isoforms have been identified for this gene. This gene has 1 or more pseudogenes. [provided by RefSeq, Feb 2016]
<b>Protein Pathways:</b>	Alzheimer's disease, Huntington's disease, Metabolic pathways, Oxidative phosphorylation, Parkinson's disease

### Product images:



Coomassie blue staining of purified ATP5PF protein (Cat# TP309756). The protein was produced from HEK293T cells transfected with ATP5PF cDNA clone (Cat# [RC209756]) using MegaTran 2.0 (Cat# [TT210002]).