

## Product datasheet for TP309751L

### LANCL2 (NM\_018697) Human Recombinant Protein

#### Product data:

Product Type:	Recombinant Proteins
Description:	Recombinant protein of human LanC lantibiotic synthetase component C-like 2 (bacterial) (LANCL2), 1 mg
Species:	Human
Expression Host:	HEK293T
Expression cDNA Clone or AA Sequence:	>RC209751 protein sequence Red=Cloning site Green=Tags(s)

MGETMSKRLKHLGGAEEMEERAFVNPFPDYAAAAGALLASGAAEETGCVRPPATPDEPGLPFHQDGKII  
 HNFIRRIQTKIKDLLQQMEEGLKTADPHDCSAYTGWTGIALLYLQLYRVTCDQTYLLRSLDYVKRTLRLNL  
 NGRRVTFLCGDAGPLAVGAVIYHKLRSDCESQECVTKLLQLQRSVVCQESDLPDELLYGRAGLYALLYL  
 NTEIGPGTVCESAIKEVNAIIESGKTLRSREERKTERCPALLYQWHRKQYVGAHGMAGIYYMLMQPAKV  
 DQETLTEMVKPSIDYVRHKKFRSGNYPSLSNETDRLVHWCHGAPGVIHMLMQAYKVFKEEKYLKEAMEC  
 SDVIWQRGLLRKGYGICHGTAGNGYSFSLYRLTQDKKYLRYACKFAEWCLDYGAHGCRIPDRPYSLFEG  
 MAGAIHFLSDVLPETSRFPAFELDSSKRD

TRTRPLEQKLISEEDLAANDILDYKDDDDKV

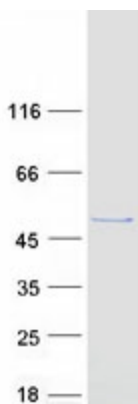
Tag:	C-Myc/DDK
Predicted MW:	50.7 kDa
Concentration:	>0.05 µg/µL as determined by microplate BCA method
Purity:	> 80% as determined by SDS-PAGE and Coomassie blue staining
Buffer:	25 mM Tris-HCl, 100 mM glycine, pH 7.3, 10% glycerol
Preparation:	Recombinant protein was captured through anti-DDK affinity column followed by conventional chromatography steps.
Note:	For testing in cell culture applications, please filter before use. Note that you may experience some loss of protein during the filtration process.
Storage:	Store at -80°C.
Stability:	Stable for 12 months from the date of receipt of the product under proper storage and handling conditions. Avoid repeated freeze-thaw cycles.



[View online »](#)

RefSeq:	<a href="#">NP_061167</a>
Locus ID:	55915
UniProt ID:	<a href="#">Q9NS86</a> , <a href="#">B3KTN5</a>
RefSeq Size:	4353
Cytogenetics:	7p11.2
RefSeq ORF:	1350
Synonyms:	GPR69B; TASP
Summary:	Necessary for abscisic acid (ABA) binding on the cell membrane and activation of the ABA signaling pathway in granulocytes.[UniProtKB/Swiss-Prot Function]
Protein Families:	Druggable Genome

### Product images:



Coomassie blue staining of purified LANCL2 protein (Cat# [TP309751]). The protein was produced from HEK293T cells transfected with LANCL2 cDNA clone (Cat# [RC209751]) using MegaTran 2.0 (Cat# [TT210002]).