

Product datasheet for **TP309740M**

RAB26 (NM_014353) Human Recombinant Protein

Product data:

Product Type:	Recombinant Proteins
Description:	Recombinant protein of human RAB26, member RAS oncogene family (RAB26), 100 µg
Species:	Human
Expression Host:	HEK293T
Expression cDNA Clone or AA Sequence:	>RC209740 protein sequence Red =Cloning site Green =Tags(s)
	 MSRKKTPKSKGASTPAASTLPTANGARPARSGTALSGPDAPPNGPLQPGRPSLGGGVDFYDVAFKVMLVG DSGVGKTCLLVRFKDGAFAGTFISTVGIDFRNKVLDVDGVKVKLQMWDTAGQERFRSVTHAYYRDAHAL LLLYDVTNKASFDNIQAWLTEIHEYAQHDVALMLLGNKVDSAHERVVKREDGEKLAKEYGLPFMETS AKT GLNVDLAFTAIAKELKRRSMKAPSEPRFRLHDYVKREGRGASCCRP TRTRPLEQKLISEEDLAANDILDYKDDDDKV
Tag:	C-Myc/DDK
Predicted MW:	27.7 kDa
Concentration:	>0.05 µg/µL as determined by microplate BCA method
Purity:	> 80% as determined by SDS-PAGE and Coomassie blue staining
Buffer:	25 mM Tris-HCl, 100 mM glycine, pH 7.3, 10% glycerol
Preparation:	Recombinant protein was captured through anti-DDK affinity column followed by conventional chromatography steps.
Note:	For testing in cell culture applications, please filter before use. Note that you may experience some loss of protein during the filtration process.
Storage:	Store at -80°C.
Stability:	Stable for 12 months from the date of receipt of the product under proper storage and handling conditions. Avoid repeated freeze-thaw cycles.
RefSeq:	NP_055168
Locus ID:	25837
UniProt ID:	Q9ULW5



[View online »](#)

RefSeq Size: 1641

Cytogenetics: 16p13.3

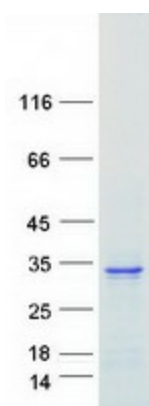
RefSeq ORF: 768

Synonyms: V46133

Summary: Members of the RAB protein family, including RAB26, are important regulators of vesicular fusion and trafficking. The RAB family of small G proteins regulates intercellular vesicle trafficking, including exocytosis, endocytosis, and recycling (summary by Seki et al., 2000 [PubMed 11043516]).[supplied by OMIM, Nov 2010]

Protein Families: Druggable Genome

Product images:



Coomassie blue staining of purified RAB26 protein (Cat# [TP309740]). The protein was produced from HEK293T cells transfected with RAB26 cDNA clone (Cat# [RC209740]) using MegaTran 2.0 (Cat# [TT210002]).