

## Product datasheet for **TP309738M**

### Galectin 13 (LGALS13) (NM\_013268) Human Recombinant Protein

#### Product data:

Product Type:	Recombinant Proteins
Description:	Recombinant protein of human lectin, galactoside-binding, soluble, 13 (LGALS13), 100 µg
Species:	Human
Expression Host:	HEK293T
Expression cDNA Clone or AA Sequence:	>RC209738 protein sequence <b>Red</b> =Cloning site <b>Green</b> =Tags(s)  MSSLPVPYKLPVSLSVGSCVLIKGTPIHSFINDPQLQVDFYTDMDSDIAFRFRVHFGNHWVMNRREFG IWMLEETTDYVPFEDGKQFELCIYVHYNEYEIKVNGIRIYGFVHRIPPSFVKMVQVSRDISLTSVCVCN  <b>TR</b> TRPLE <b>QKLISEEDLA</b> ANDILDYKDDDDKV
Tag:	C-Myc/DDK
Predicted MW:	15.9 kDa
Concentration:	>0.05 µg/µL as determined by microplate BCA method
Purity:	> 80% as determined by SDS-PAGE and Coomassie blue staining
Buffer:	25 mM Tris-HCl, 100 mM glycine, pH 7.3, 10% glycerol
Preparation:	Recombinant protein was captured through anti-DDK affinity column followed by conventional chromatography steps.
Note:	For testing in cell culture applications, please filter before use. Note that you may experience some loss of protein during the filtration process.
Storage:	Store at -80°C.
Stability:	Stable for 12 months from the date of receipt of the product under proper storage and handling conditions. Avoid repeated freeze-thaw cycles.
RefSeq:	<a href="#">NP_037400</a>
Locus ID:	29124
UniProt ID:	<a href="#">Q9UHV8</a>
RefSeq Size:	610
Cytogenetics:	19q13.2

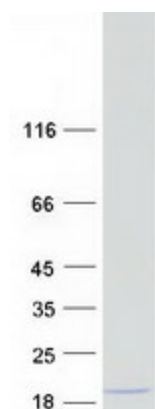

[View online »](#)

RefSeq ORF: 417

Synonyms: GAL13; PLAC8; PP13

**Summary:** Lysophospholipases are enzymes that act on biological membranes to regulate the multifunctional lysophospholipids. The protein encoded by this gene has lysophospholipase activity. It is composed of two identical subunits which are held together by disulfide bonds. This protein has structural similarity to several members of the beta-galactoside-binding S-type lectin family. [provided by RefSeq, Jul 2008]

## Product images:



Coomassie blue staining of purified LGALS13 protein (Cat# [TP309738]). The protein was produced from HEK293T cells transfected with LGALS13 cDNA clone (Cat# [RC209738]) using MegaTran 2.0 (Cat# [TT210002]).